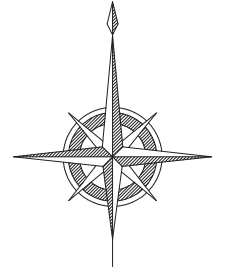


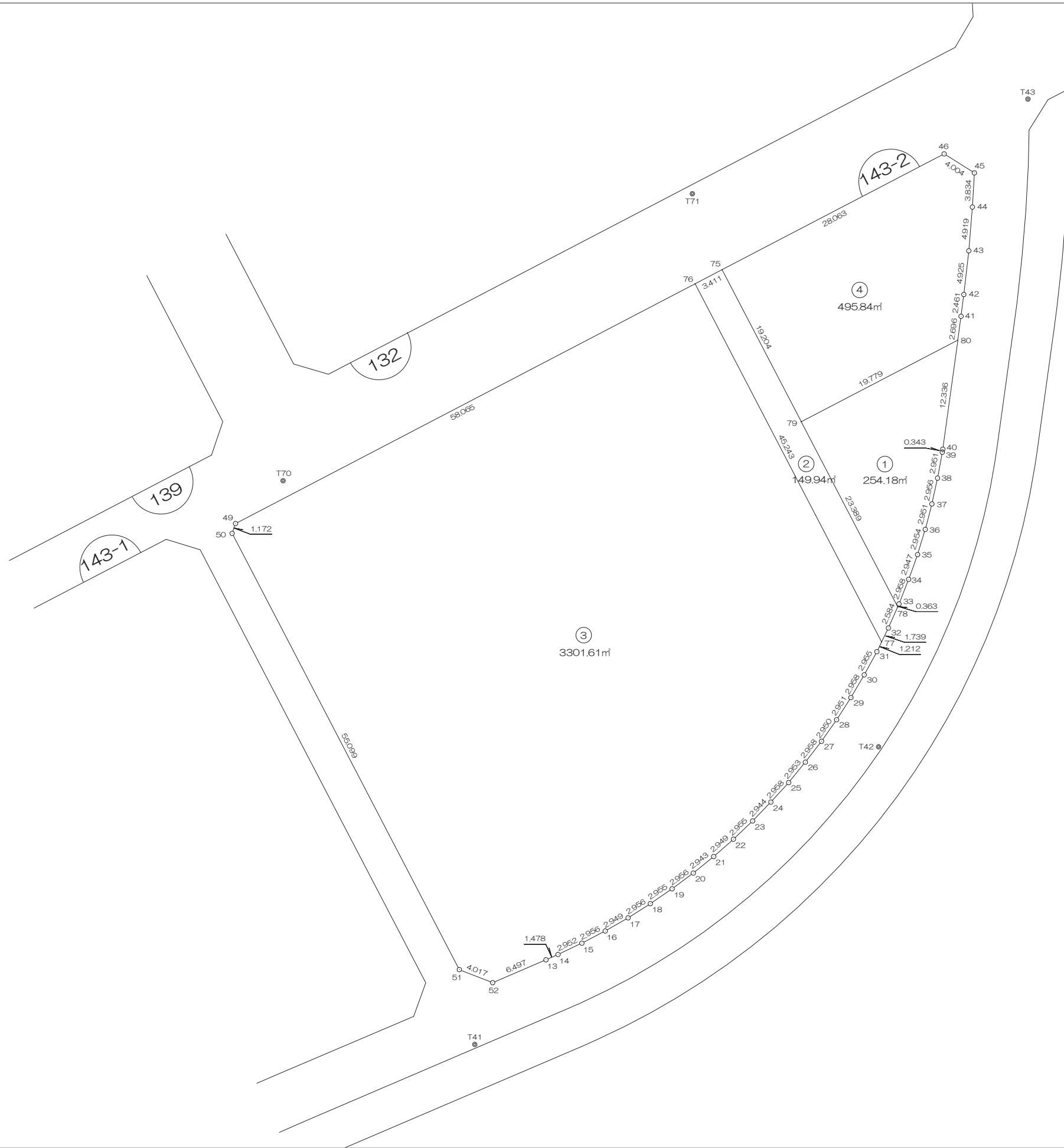
北部第三地区 画地出来形確認測量原図

〈143-2街区〉

平成二十四年三月



S=1:500



前橋市

# 画地出来形面積計算書

世界測地系

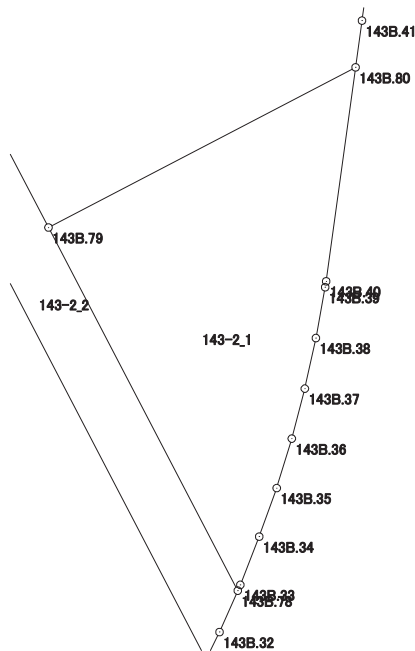
現場名：北部第三地区

地番名： 143-2\_1

点名	Xn	Yn	距離	方向角	Yn+1-Yn-1	Xn × (Yn+1-Yn-1)
143B.33	47582.479	-69261.722	2.958	21° 23' 42"	1.225	58288.536775
143B.34	47585.233	-69260.643	2.947	19° 49' 07"	2.078	98882.114174
143B.35	47588.005	-69259.644	2.954	16° 56' 40"	1.860	88513.689300
143B.36	47590.831	-69258.783	2.951	14° 38' 37"	1.607	76478.465417
143B.37	47593.686	-69258.037	2.956	12° 19' 30"	1.377	65536.505622
143B.38	47596.574	-69257.406	2.951	10° 20' 47"	1.161	55259.622414
143B.39	47599.477	-69256.876	0.343	9° 34' 20"	0.587	27940.892999
143B.40	47599.815	-69256.819	12.336	7° 49' 22"	1.736	82633.278840
143B.80	47612.036	-69255.140	19.779	242° 27' 15"	-15.858	-755031.666888
143B.79	47602.889	-69272.677	23.389	152° 28' 31"	-6.728	-320272.237192
143B.78	47582.147	-69261.868	0.363	23° 44' 17"	10.955	521262.420385

倍面積合計	-508.378154
1/2	254.1890770

合計面積	254.1890770
------	-------------



# 画地出来形面積計算書

世界測地系

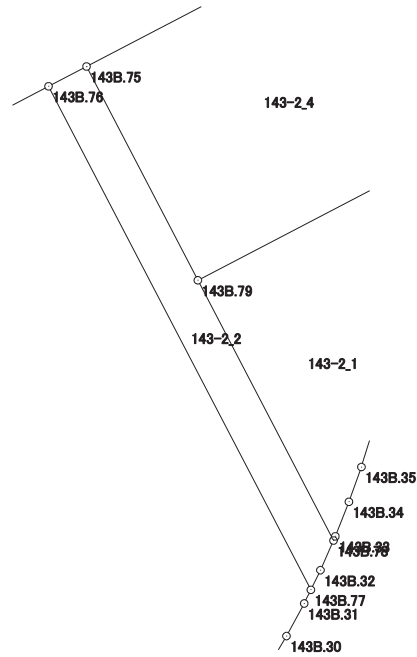
現場名：北部第三地区

地番名： 143-2\_2

点名	Xn	Yn	距離	方向角	Yn+1-Yn-1	Xn × (Yn+1-Yn-1)
143B.76	47618.345	-69284.573	45.243	152° 29' 13"	17.875	851177.916875
143B.77	47578.219	-69263.673	1.739	26° 01' 12"	21.663	1030686.958197
143B.32	47579.782	-69262.910	2.584	23° 46' 40"	1.805	85881.506510
143B.78	47582.147	-69261.868	23.389	332° 28' 31"	-9.767	-464734.829749
143B.79	47602.889	-69272.677	19.204	332° 29' 15"	-19.680	-936824.855520
143B.75	47619.921	-69281.548	3.411	242° 28' 51"	-11.896	-566486.580216

倍面積合計	-299.883903
1/2	149.9419515

合計面積	149.9419515
------	-------------



# 画地出来形面積計算書

世界測地系

現場名：北部第三地区

地番名： 143-2\_3

点名	Xn	Yn	距離	方向角	Yn+1-Yn-1	Xn × (Yn+1-Yn-1)
143B. 49	47591.487	-69336.053	1.172	198° 58' 34"	-51.861	-2468142.107307
143B. 50	47590.379	-69336.434	55.099	152° 29' 34"	25.067	1192948.030393
143B. 51	47541.509	-69310.986	4.017	111° 20' 45"	29.189	1387689.106201
143B. 52	47540.047	-69307.245	6.497	66° 45' 56"	9.711	461661.396417
143B. 13	47542.610	-69301.275	1.478	66° 13' 35"	7.323	348154.533030
143B. 14	47543.206	-69299.922	2.952	64° 39' 00"	4.021	191171.231326
143B. 15	47544.470	-69297.254	2.956	62° 27' 19"	5.289	251462.701830
143B. 16	47545.837	-69294.633	2.949	60° 06' 21"	5.178	246192.343986
143B. 17	47547.307	-69292.076	2.956	57° 27' 38"	5.049	240066.353043
143B. 18	47548.897	-69289.584	2.955	55° 43' 45"	4.934	234606.257798
143B. 19	47550.561	-69287.142	2.956	53° 21' 46"	4.814	228908.400654
143B. 20	47552.325	-69284.770	2.943	50° 55' 47"	4.657	221451.177525
143B. 21	47554.180	-69282.485	2.949	48° 41' 04"	4.500	213993.810000
143B. 22	47556.127	-69280.270	2.955	46° 30' 29"	4.359	207297.157593
143B. 23	47558.161	-69278.126	2.944	43° 59' 43"	4.189	199221.136429
143B. 24	47560.279	-69276.081	2.958	42° 26' 16"	4.041	192191.087439
143B. 25	47562.462	-69274.085	2.953	39° 12' 52"	3.863	183733.790706
143B. 26	47564.750	-69272.218	2.958	37° 42' 24"	3.676	174848.021000
143B. 27	47567.090	-69270.409	2.950	35° 00' 17"	3.501	166532.382090
143B. 28	47569.506	-69268.717	2.951	32° 51' 19"	3.293	156646.383258
143B. 29	47571.985	-69267.116	2.958	30° 29' 31"	3.102	147568.297470
143B. 30	47574.534	-69265.615	2.955	28° 31' 31"	2.912	138537.043008
143B. 31	47577.130	-69264.204	1.212	25° 59' 38"	1.942	92394.786460
143B. 77	47578.219	-69263.673	45.243	332° 29' 13"	-20.369	-969120.742811
143B. 76	47618.345	-69284.573	58.065	242° 26' 53"	-72.380	-3446615.811100

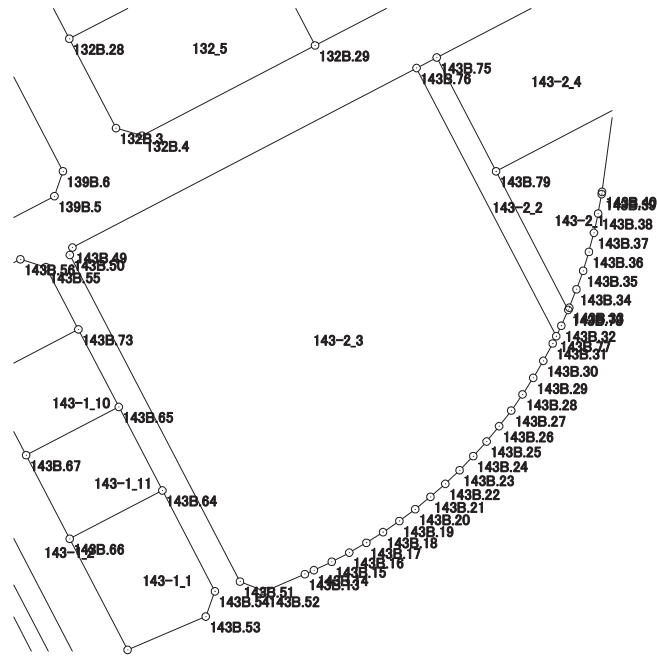
倍面積合計	-6603.233562
1/2	3301.6167810

合計面積	3301.6167810
------	--------------

# 画地出来形面積計算書

世界測地系

現場名：北部第三地区



# 画地出来形面積計算書

世界測地系

現場名：北部第三地区

地番名： 143-2\_4

点名	Xn	Yn	距離	方向角	Yn+1-Yn-1	Xn × (Yn+1-Yn-1)
143B.75	47619.921	-69281.548	19.204	152° 29' 15"	-16.010	-762394.935210
143B.79	47602.889	-69272.677	19.779	62° 27' 15"	26.408	1257097.092712
143B.80	47612.036	-69255.140	2.696	7° 48' 09"	17.903	852398.280508
143B.41	47614.707	-69254.774	2.461	7° 15' 39"	0.677	32235.156639
143B.42	47617.148	-69254.463	4.925	6° 28' 12"	0.866	41236.450168
143B.43	47622.042	-69253.908	4.919	4° 42' 41"	0.959	45669.538278
143B.44	47626.944	-69253.504	3.834	3° 23' 40"	0.631	30052.601664
143B.45	47630.771	-69253.277	4.004	302° 08' 31"	-3.163	-150656.128673
143B.46	47632.901	-69256.667	28.063	242° 26' 59"	-28.271	-1346629.744171

倍面積合計	-991.688085
1/2	495.8440425

合計面積	495.8440425
------	-------------

