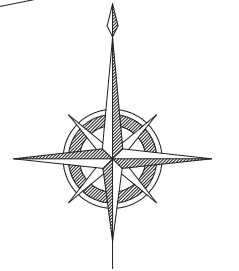


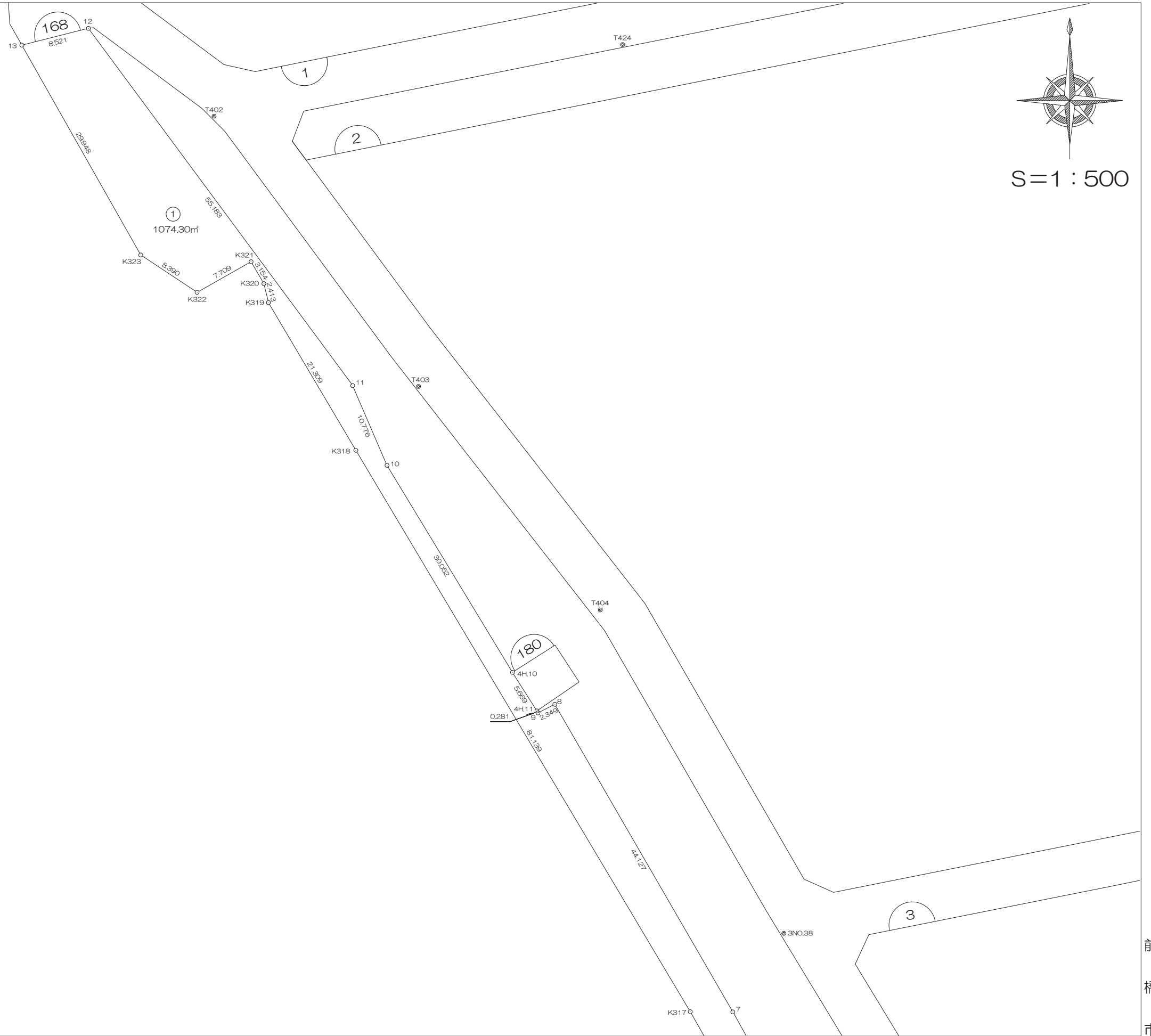
北部第三地区 画地出来形確認測量原図

〈168街区〉-1

平成二十四年三月



S=1:500

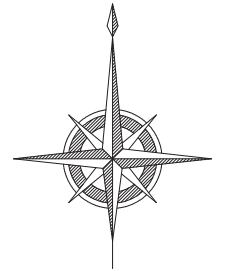


前橋市

北部第三地区 画地出来形確認測量原図

〈168街区〉-2

平成二十四年三月



S=1:500



前橋市

画地出来形面積計算書

世界測地系

現場名：北部第三地区

地番名： 168_1

点名	Xn	Yn	距離	方向角	Yn+1-Yn-1	Xn × (Yn+1-Yn-1)
K318	48698.846	-70616.407	81.139	149° 12' 44"	52.385	2551089.047710
K317	48629.142	-70574.875	22.494	150° 25' 22"	52.635	2559594.889170
K316	48609.579	-70563.772	7.413	153° 59' 54"	14.353	697693.287387
K315	48602.916	-70560.522	18.205	150° 56' 29"	12.092	587706.460272
K314	48587.003	-70551.680	8.748	156° 22' 26"	12.348	599952.313044
K313	48578.988	-70548.174	8.952	163° 27' 21"	6.055	294145.772340
K312	48570.407	-70545.625	39.300	165° 44' 26"	12.229	593967.507203
K311-4	48532.318	-70535.945	0.401	165° 43' 17"	9.779	474597.537722
168B.1	48531.929	-70535.846	3.615	70° 00' 22"	3.496	169667.623784
168B.2	48533.165	-70532.449	19.814	347° 34' 22"	-0.867	-42078.254055
168B.15	48552.515	-70536.713	3.281	307° 04' 21"	-6.882	-334138.408230
168B.16	48554.493	-70539.331	12.854	344° 25' 19"	-6.070	-294725.772510
168B.17	48566.875	-70542.783	10.773	345° 21' 13"	-6.176	-299949.020000
168B.18	48577.298	-70545.507	38.768	337° 08' 39"	-17.782	-863801.513036
168B.6	48613.022	-70560.565	18.455	330° 43' 10"	-24.084	-1170796.021848
168B.7	48629.119	-70569.591	44.127	329° 56' 26"	-31.129	-1513775.845351
168B.8	48667.311	-70591.694	2.349	242° 52' 43"	-24.194	-1177456.922334
168B.9	48666.240	-70593.785	0.281	331° 58' 32"	-2.223	-108185.051520
4H.11	48666.488	-70593.917	5.669	327° 36' 59"	-3.168	-154175.433984
4H.10	48671.275	-70596.953	30.052	328° 45' 51"	-18.620	-906259.140500
168B.10	48696.971	-70612.537	10.776	336° 44' 31"	-19.839	-966099.207669
168B.11	48706.871	-70616.792	55.183	323° 29' 33"	-37.085	-1806294.311035
168B.12	48751.226	-70649.622	8.521	255° 52' 15"	-41.093	-2003334.130018
168B.13	48749.146	-70657.885	29.948	150° 27' 37"	6.502	316966.947292
K323	48723.091	-70643.120	8.390	123° 30' 30"	21.761	1060263.183251
K322	48718.459	-70636.124	7.709	60° 30' 08"	13.706	667735.199054
K321	48722.255	-70629.414	3.154	149° 48' 32"	8.296	404199.827480
K320	48719.529	-70627.828	2.413	166° 23' 03"	2.154	104941.865466
K319	48717.184	-70627.260	21.309	149° 22' 54"	11.421	556398.958464

倍面積合計	-2148.612451
1/2	1074.3062255

合計面積	1074.3062255
------	--------------

画地出来形面積計算書

世界測地系

現場名：北部第三地区

