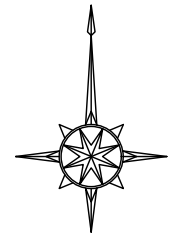
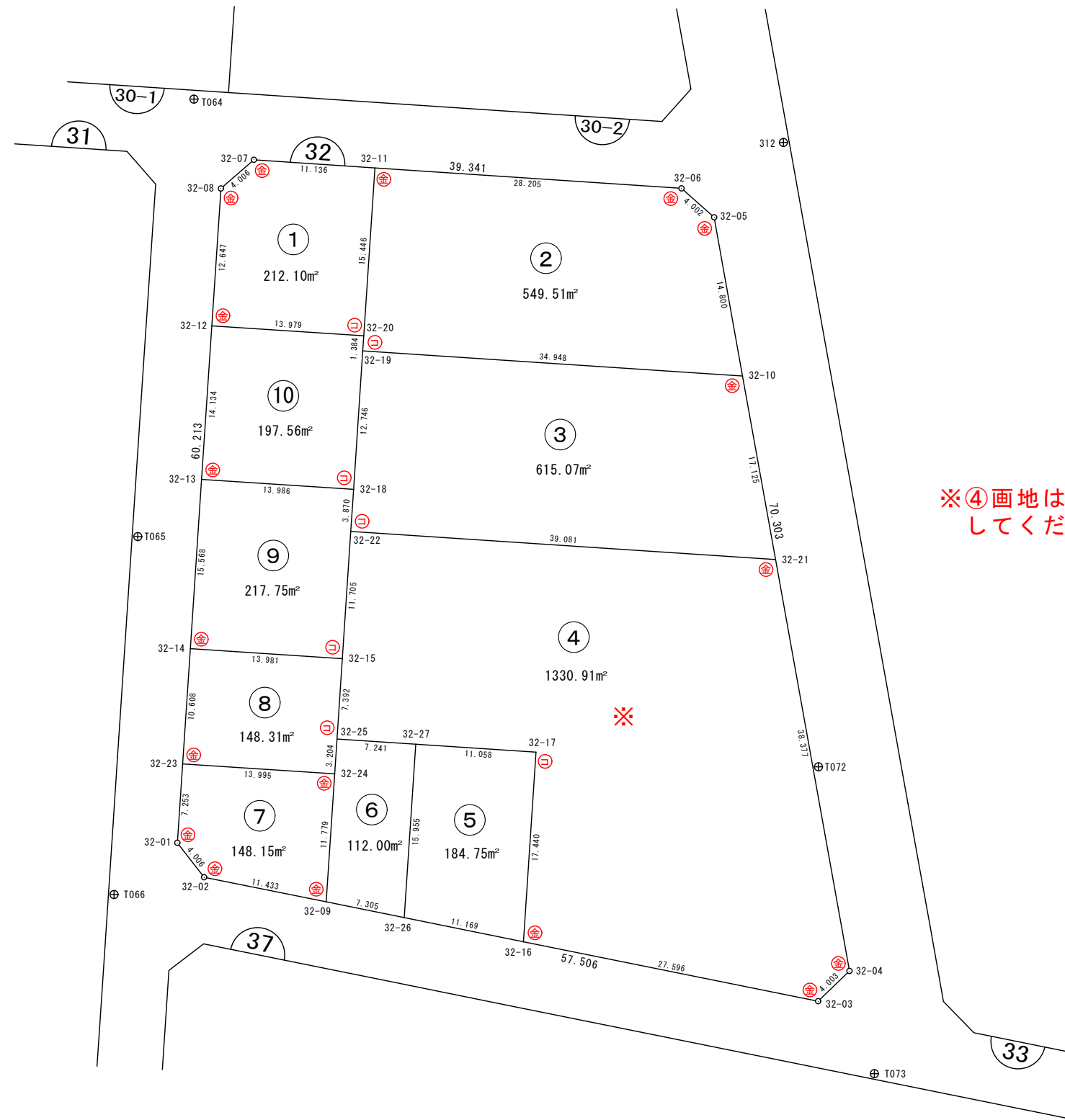


32街区 画地出来形確認図 (3716.15㎡)

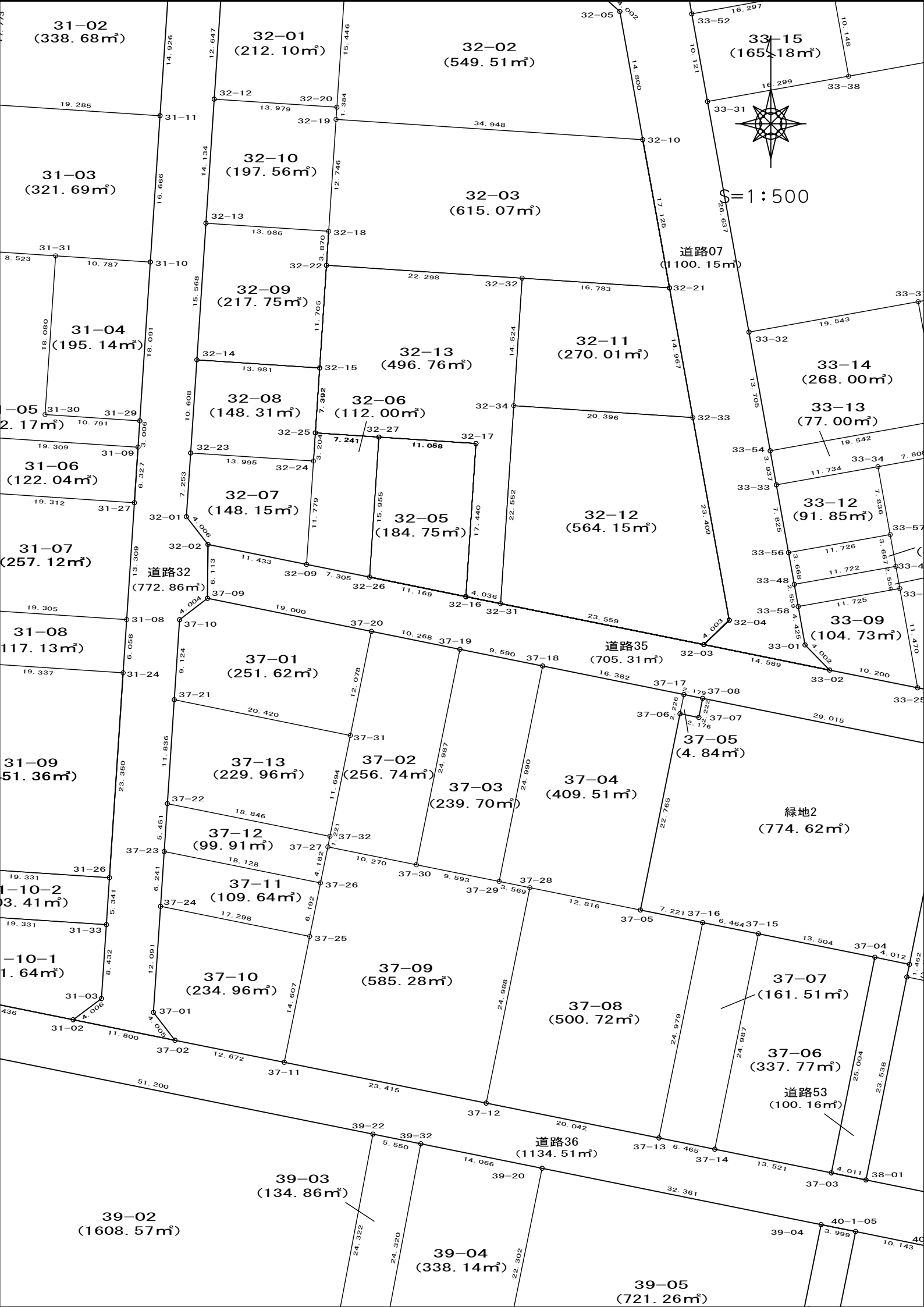


S=1:500



※④画地は分筆しています。次ページで確認してください。

凡 例	
事 項	記 号
金属プレート	⊕
コンクリート杭	⊖
金属 鋸	⊗
合成樹脂杭	⊙
マーキング	⊚



31-02
(338.68m²)

32-01
(212.10m²)

32-02
(549.51m²)

33-15
(165.18m²)

31-03
(321.69m²)

32-10
(197.56m²)

32-03
(615.07m²)

1:500

31-04
(195.14m²)

32-09
(217.75m²)

32-13
(496.76m²)

32-11
(270.01m²)

33-14
(268.00m²)

31-05
(2.17m²)

32-08
(148.31m²)

32-06
(112.00m²)

33-13
(77.00m²)

31-06
(122.04m²)

32-07
(148.15m²)

32-05
(184.75m²)

32-12
(564.15m²)

33-12
(91.85m²)

31-07
(257.12m²)

道路32
(772.86m²)

32-01
(148.15m²)

32-09
(148.31m²)

32-16
(564.15m²)

33-09
(104.73m²)

31-08
(117.13m²)

37-01
(251.62m²)

道路35
(705.31m²)

33-08
(104.73m²)

31-09
(51.36m²)

37-13
(229.96m²)

37-02
(256.74m²)

37-04
(409.51m²)

33-07
(104.73m²)

31-10-2
(3.41m²)

37-12
(99.91m²)

37-03
(239.70m²)

37-05
(4.84m²)

33-06
(104.73m²)

31-10-1
(1.64m²)

37-11
(109.64m²)

37-09
(585.28m²)

37-08
(500.72m²)

33-05
(104.73m²)

37-10
(234.96m²)

37-07
(161.51m²)

33-04
(104.73m²)

37-09
(585.28m²)

37-06
(337.77m²)

33-03
(104.73m²)

37-10
(234.96m²)

37-05
(500.72m²)

33-02
(104.73m²)

37-09
(585.28m²)

37-04
(409.51m²)

33-01
(104.73m²)

37-10
(234.96m²)

37-03
(239.70m²)

33-00
(104.73m²)

37-09
(585.28m²)

37-02
(256.74m²)

33-00
(104.73m²)

37-10
(234.96m²)

37-01
(251.62m²)

33-00
(104.73m²)

37-09
(585.28m²)

37-00
(251.62m²)

33-00
(104.73m²)

37-10
(234.96m²)

37-00
(251.62m²)

33-00
(104.73m²)

37-09
(585.28m²)

37-00
(251.62m²)

33-00
(104.73m²)

37-10
(234.96m²)

37-00
(251.62m²)

33-00
(104.73m²)

37-09
(585.28m²)

37-00
(251.62m²)

33-00
(104.73m²)

37-10
(234.96m²)

37-00
(251.62m²)

33-00
(104.73m²)

緑地2
(774.62m²)

道路53
(100.16m²)

道路36
(1134.51m²)

39-03
(134.86m²)

39-04
(338.14m²)

39-05
(721.26m²)

39-02
(1608.57m²)

40-1-05
(3.999m²)

40-1-04
(10.143m²)

画地面積(座標法)計算簿

画地番号：32-01

点名	Xn	Yn	距離	方向角	X _{n+1} -X _{n-1}	Y _{n+1} -Y _{n-1}	X _n *(Y _{n+1} -Y _{n-1})	Y _n *(X _{n+1} -X _{n-1})
32-12	47883.254	-71069.190	12.647	3° 48' 13"	13.533	-13.111	-627797.343194	-961779.348270
32-08	47895.874	-71068.351	4.006	49° 01' 41"	15.247	3.864	185069.657136	-1083579.147697
32-07	47898.501	-71065.326	11.136	93° 51' 05"	1.879	14.136	677093.210136	-133531.747554
32-11	47897.753	-71054.215	15.446	183° 48' 18"	-16.160	10.086	483096.736758	1148236.114400
32-20	47882.341	-71055.240	13.979	273° 44' 40"	-14.499	-14.975	-717038.056475	1030229.924760
							倍面積	424.204361
							面積	212.1021805
							地積	212.10

画地面積(座標法)計算簿

画地番号：32-02

点名	X _n	Y _n	距離	方向角	X _{n+1} -X _{n-1}	Y _{n+1} -Y _{n-1}	X _n *(Y _{n+1} -Y _{n-1})	Y _n *(X _{n+1} -X _{n-1})
32-19	47880.960	-71055.339	1.384	4° 06' 01"	3.687	-34.773	-1664964.622080	-261981.034893
32-20	47882.341	-71055.240	15.446	3° 48' 18"	16.793	1.124	53819.751284	-1193230.645320
32-11	47897.753	-71054.215	28.205	93° 48' 27"	13.539	29.168	1397081.659504	-962003.016885
32-06	47895.880	-71026.072	4.002	131° 37' 01"	-4.531	31.135	1491238.223800	321819.132232
32-05	47893.222	-71023.080	14.800	169° 49' 52"	-17.226	5.605	268441.509310	1223443.576080
32-10	47878.654	-71020.467	34.948	273° 47' 00"	-12.262	-32.259	-1544517.499386	870852.966354
							倍面積	1099.022432
							面積	549.5112160
							地積	549.51

画地面積(座標法)計算簿

画地番号：32-03

点名	X _n	Y _n	距離	方向角	X _{n+1} -X _{n-1}	Y _{n+1} -Y _{n-1}	X _n *(Y _{n+1} -Y _{n-1})	Y _n *(X _{n+1} -X _{n-1})
32-22	47864.379	-71056.431	3.870	3° 48' 26"	5.334	-21.993	-1052681.287347	-379015.002954
32-18	47868.241	-71056.174	12.746	3° 45' 22"	16.581	1.092	52272.119172	-1178182.421094
32-19	47880.960	-71055.339	34.948	93° 47' 00"	10.413	35.707	1709685.438720	-739899.245007
32-10	47878.654	-71020.467	17.125	169° 47' 56"	-19.161	37.905	1814840.379870	1360823.168187
32-21	47861.799	-71017.434	16.783	273° 47' 07"	-15.747	-13.714	-656376.711486	1118311.533198
32-32	47862.907	-71034.181	22.298	273° 47' 06"	2.580	-38.997	-1866509.784279	-183268.186980
							倍面積	1230.154650
							面積	615.0773250
							地積	615.07

画地面積(座標法)計算簿

画地番号：32-05

点名	Xn	Yn	距離	方向角	X _{n+1} -X _{n-1}	Y _{n+1} -Y _{n-1}	X _n *(Y _{n+1} -Y _{n-1})	Y _n *(X _{n+1} -X _{n-1})
32-27	47844.844	-71050.466	15.955	183° 48' 59"	-15.188	-12.096	-578731.233024	1079114.477608
32-26	47828.924	-71051.528	11.169	101° 26' 16"	-18.135	9.886	472836.742664	1288519.460280
32-16	47826.709	-71040.580	17.440	3° 46' 27"	15.188	12.096	578511.872064	-1078964.329040
32-17	47844.112	-71039.432	11.058	273° 47' 44"	18.135	-9.886	-472986.891232	-1288300.099320
							倍面積	-369.509528
							面積	184.7547640
							地積	184.75

画地面積(座標法)計算簿

画地番号：32-06

点名	X _n	Y _n	距離	方向角	X _{n+1} -X _{n-1}	Y _{n+1} -Y _{n-1}	X _n *(Y _{n+1} -Y _{n-1})	Y _n *(X _{n+1} -X _{n-1})
32-26	47828.924	-71051.528	15.955	3° 48' 59"	14.472	8.223	393297.242052	-1028257.713216
32-27	47844.844	-71050.466	7.241	273° 47' 33"	16.399	-6.164	-294915.618416	-1165156.591934
32-25	47845.323	-71057.692	3.204	183° 45' 25"	-2.719	-7.436	-355777.821828	193205.864548
32-24	47842.125	-71057.902	11.779	183° 49' 51"	-14.951	-0.997	-47698.598625	1062386.692802
32-09	47830.372	-71058.689	7.305	101° 25' 53"	-13.201	6.374	304870.791128	938045.753489
							倍面積	-224.005689
							面積	112.0028445
							地積	112.00

画地面積(座標法)計算簿

画地番号：32-07

点名	Xn	Yn	距離	方向角	X _{n+1} -X _{n-1}	Y _{n+1} -Y _{n-1}	X _n *(Y _{n+1} -Y _{n-1})	Y _n *(X _{n+1} -X _{n-1})
32-02	47832.629	-71069.898	4.006	322° 11' 20"	5.422	-13.665	-653632.875285	-385340.986956
32-01	47835.794	-71072.354	7.253	3° 50' 31"	10.402	-1.970	-94236.514180	-739294.626308
32-23	47843.031	-71071.868	13.995	93° 42' 42"	6.331	14.452	691427.484012	-449955.996308
32-24	47842.125	-71057.902	11.779	183° 49' 51"	-12.659	13.179	630511.365375	899521.981418
32-09	47830.372	-71058.689	11.433	281° 23' 05"	-9.496	-11.996	-573773.142512	674773.310744
							倍面積	296.317410
							面積	148.1587050
							地積	148.15

画地面積(座標法)計算簿

画地番号：32-08

点名	Xn	Yn	距離	方向角	X _{n+1} -X _{n-1}	Y _{n+1} -Y _{n-1}	X _n *(Y _{n+1} -Y _{n-1})	Y _n *(X _{n+1} -X _{n-1})
32-23	47843.031	-71071.868	10.608	3° 50' 54"	11.491	-13.254	-634111.532874	-816686.835188
32-14	47853.616	-71071.156	13.981	93° 45' 38"	9.668	14.663	701677.571408	-687115.936208
32-15	47852.699	-71057.205	7.392	183° 46' 39"	-8.293	13.464	644288.739336	589277.401065
32-25	47845.323	-71057.692	3.204	183° 45' 25"	-10.574	-0.697	-33348.190131	751364.035208
32-24	47842.125	-71057.902	13.995	273° 42' 42"	-2.292	-14.176	-678209.964000	162864.711384
							倍面積	296.623739
							面積	148.3118695
							地積	148.31

画地面積(座標法)計算簿

画地番号：32-09

点名	Xn	Yn	距離	方向角	X _{n+1} -X _{n-1}	Y _{n+1} -Y _{n-1}	X _n *(Y _{n+1} -Y _{n-1})	Y _n *(X _{n+1} -X _{n-1})
32-14	47853.616	-71071.156	15.568	3° 46' 30"	16.452	-12.926	-618555.840416	-1169262.658512
32-13	47869.151	-71070.131	13.986	93° 43' 50"	14.625	14.982	717175.620282	-1039400.665875
32-18	47868.241	-71056.174	3.870	183° 48' 26"	-4.772	13.700	655794.901700	339080.062328
32-22	47864.379	-71056.431	11.705	183° 47' 29"	-15.542	-1.031	-49348.174749	1104359.050602
32-15	47852.699	-71057.205	13.981	273° 45' 38"	-10.763	-14.725	-704630.992775	764788.697415
							倍面積	435.514042
							面積	217.7570210
							地積	217.75

画地面積(座標法)計算簿

画地番号：32-10

点名	X _n	Y _n	距離	方向角	X _{n+1} -X _{n-1}	Y _{n+1} -Y _{n-1}	X _n *(Y _{n+1} -Y _{n-1})	Y _n *(X _{n+1} -X _{n-1})
32-13	47869.151	-71070.131	14.134	3° 49' 02"	15.013	-13.016	-623064.869416	-1066975.876703
32-12	47883.254	-71069.190	13.979	93° 44' 40"	13.190	14.891	713029.535314	-937402.616100
32-20	47882.341	-71055.240	1.384	184° 06' 01"	-2.294	13.851	663218.305191	163000.720560
32-19	47880.960	-71055.339	12.746	183° 45' 22"	-14.100	-0.934	-44720.816640	1001880.279900
32-18	47868.241	-71056.174	13.986	273° 43' 50"	-11.809	-14.792	-708067.020872	839102.358766
							倍面積	395.133577
							面積	197.5667885
							地積	197.56

画地面積(座標法)計算簿

画地番号：32-11

点名	Xn	Yn	距離	方向角	X _{n+1} -X _{n-1}	Y _{n+1} -Y _{n-1}	X _n *(Y _{n+1} -Y _{n-1})	Y _n *(X _{n+1} -X _{n-1})
32-34	47848.414	-71035.139	14.524	3° 46' 54"	15.840	-19.394	-927972.141116	-1125196.601760
32-32	47862.907	-71034.181	16.783	93° 47' 07"	13.385	17.705	847412.768435	-950792.512685
32-21	47861.799	-71017.434	14.967	169° 48' 50"	-15.840	19.394	928231.729806	1124916.154560
32-33	47847.067	-71014.787	20.396	273° 47' 12"	-13.385	-17.705	-847132.321235	950532.923995
倍面積								540.035890
面積								270.0179450
地積								270.01

画地面積(座標法)計算簿

画地番号：32-12

点名	Xn	Yn	距離	方向角	X _{n+1} -X _{n-1}	Y _{n+1} -Y _{n-1}	X _n *(Y _{n+1} -Y _{n-1})	Y _n *(X _{n+1} -X _{n-1})
32-33	47847.067	-71014.787	20.396	273° 47' 12"	24.387	-24.493	-1171918.212031	-1731837.610569
32-34	47848.414	-71035.139	22.552	183° 46' 22"	-21.157	-21.836	-1044817.968104	1502890.435823
32-31	47825.910	-71036.623	23.559	101° 24' 38"	-27.165	21.610	1033517.915100	1929709.863795
32-03	47821.249	-71013.529	4.003	46° 03' 45"	-1.883	25.977	1242252.585273	133718.475107
32-04	47824.027	-71010.646	23.409	349° 48' 39"	25.818	-1.258	-60162.625966	-1833352.858428
							倍面積	-1128.305728
							面積	564.1528640
							地積	564.15

画地面積(座標法)計算簿

画地番号：32-13

点名	Xn	Yn	距離	方向角	X _{n+1} -X _{n-1}	Y _{n+1} -Y _{n-1}	X _n *(Y _{n+1} -Y _{n-1})	Y _n *(X _{n+1} -X _{n-1})
32-22	47864.379	-71056.431	22.298	93° 47' 06"	10.208	23.024	1102029.462096	-725344.047648
32-32	47862.907	-71034.181	14.524	183° 46' 54"	-15.965	21.292	1019097.015844	1134060.699665
32-34	47848.414	-71035.139	22.552	183° 46' 22"	-36.997	-2.442	-116845.826988	2628087.037583
32-31	47825.910	-71036.623	4.036	281° 24' 57"	-21.705	-5.441	-260220.776310	1541849.902215
32-16	47826.709	-71040.580	17.440	3° 46' 27"	18.202	-2.809	-134345.225581	-1293080.637160
32-17	47844.112	-71039.432	11.058	273° 47' 44"	18.135	-9.886	-472986.891232	-1288300.099320
32-27	47844.844	-71050.466	7.241	273° 47' 33"	1.211	-18.260	-873646.851440	-86042.114326
32-25	47845.323	-71057.692	7.392	3° 46' 39"	7.855	-6.739	-322429.631697	-558158.170660
32-15	47852.699	-71057.205	11.705	3° 47' 29"	19.056	1.261	60342.253439	-1354066.098480
							倍面積	993.528131
							面積	496.7640655
							地積	496.76