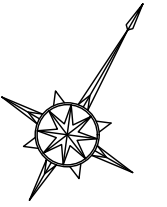
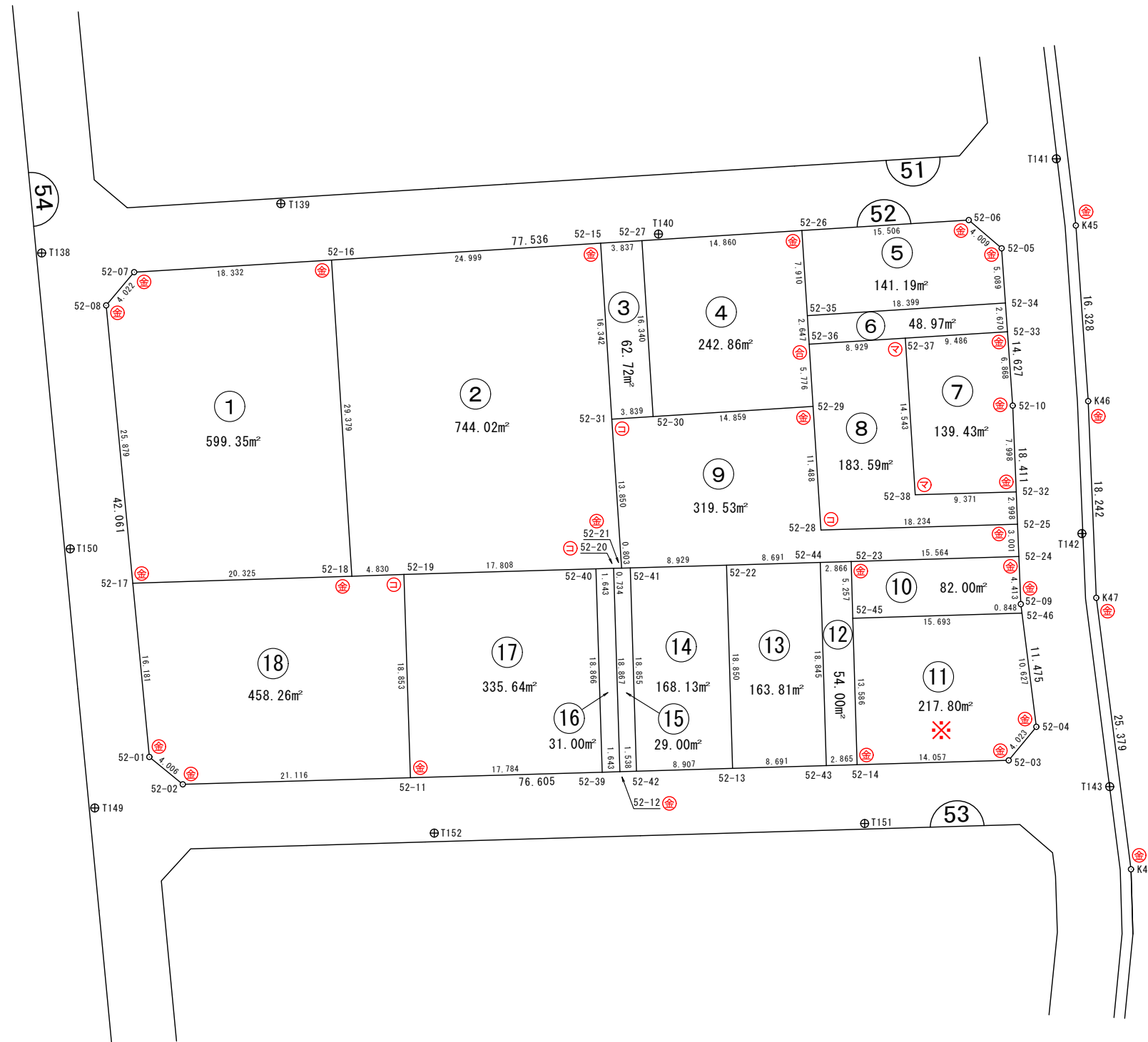


# 52街区 画地出来形確認図 (4021.40㎡)

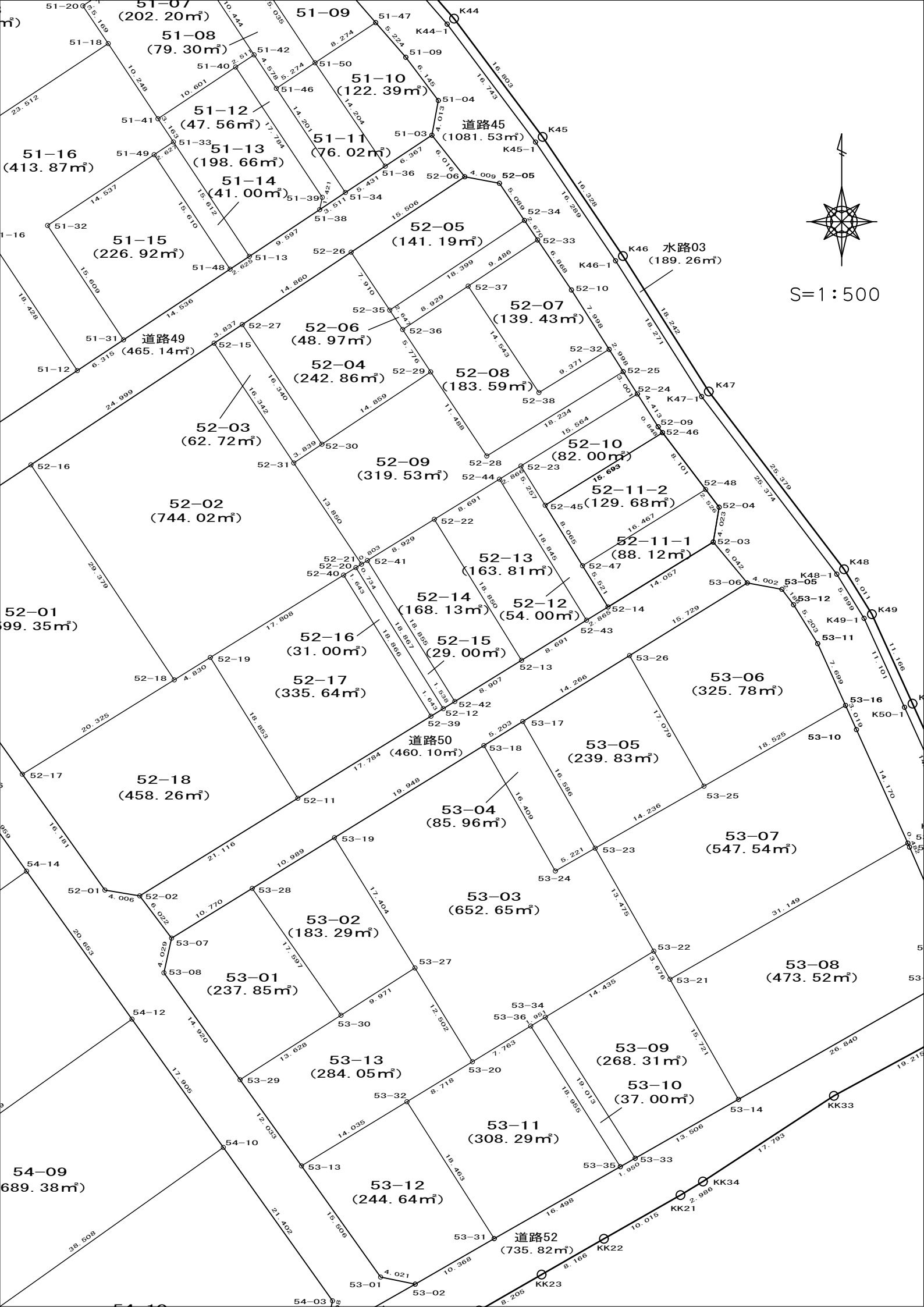


S=1:500



※⑪画地は分筆しています。次ページで確認してください。

凡 例	
事 項	記 号
金属プレート	⊕
コンクリート杭	⊖
金属釘	⊗
合成樹脂杭	⊙
マーキング	⊚



## 画地面積(座標法)計算簿

画地番号：52-01

点名	Xn	Yn	距離	方向角	X <sub>n+1</sub> -X <sub>n-1</sub>	Y <sub>n+1</sub> -Y <sub>n-1</sub>	X <sub>n</sub> *(Y <sub>n+1</sub> -Y <sub>n-1</sub> )	Y <sub>n</sub> *(X <sub>n+1</sub> -X <sub>n-1</sub> )
52-17	47420.273	-70565.756	25.879	324° 32' 42"	10.362	-32.281	-1530773.832713	-731202.363672
52-08	47441.354	-70580.768	4.022	10° 03' 00"	25.042	-14.310	-678885.775740	-1767483.592256
52-07	47445.315	-70580.066	18.332	56° 28' 47"	14.085	15.986	758460.805590	-994120.229610
52-16	47455.439	-70564.782	29.379	146° 18' 53"	-14.323	31.579	1498595.308181	1010699.372586
52-18	47430.992	-70548.487	20.325	238° 10' 19"	-35.166	-0.974	-46197.786208	2480908.093842
<b>倍面積</b>							1198.719110	
<b>面積</b>							599.3595550	
<b>地積</b>							599.35	

## 画地面積(座標法)計算簿

画地番号：52-02

点名	X <sub>n</sub>	Y <sub>n</sub>	距離	方向角	X <sub>n+1</sub> -X <sub>n-1</sub>	Y <sub>n+1</sub> -Y <sub>n-1</sub>	X <sub>n</sub> *(Y <sub>n+1</sub> -Y <sub>n-1</sub> )	Y <sub>n</sub> *(X <sub>n+1</sub> -X <sub>n-1</sub> )
52-18	47430.992	-70548.487	29.379	326° 18' 53"	21.891	-20.394	-967307.650848	-1544376.928917
52-16	47455.439	-70564.782	24.999	56° 25' 23"	38.273	4.533	215115.504987	-2700725.901486
52-15	47469.265	-70543.954	16.342	146° 22' 44"	0.217	29.877	1418239.230405	-15308.038018
52-31	47455.656	-70534.905	13.850	146° 13' 30"	-25.122	16.749	794834.782344	1771977.883410
52-21	47444.143	-70527.205	0.734	239° 12' 37"	-11.889	7.069	335382.646867	838497.940245
52-20	47443.767	-70527.836	1.643	238° 19' 51"	-1.239	-2.030	-96310.847010	87383.988804
52-40	47442.904	-70529.235	17.808	238° 18' 26"	-10.219	-16.552	-785274.947008	720738.252465
52-19	47433.548	-70544.388	4.830	238° 03' 13"	-11.912	-19.252	-913190.666096	840324.749856
							倍面積	1488.053641
							面積	744.0268205
							地積	744.02

## 画地面積(座標法)計算簿

画地番号：52-03

点名	X <sub>n</sub>	Y <sub>n</sub>	距離	方向角	X <sub>n+1</sub> -X <sub>n-1</sub>	Y <sub>n+1</sub> -Y <sub>n-1</sub>	X <sub>n</sub> *(Y <sub>n+1</sub> -Y <sub>n-1</sub> )	Y <sub>n</sub> *(X <sub>n+1</sub> -X <sub>n-1</sub> )
52-30	47457.782	-70531.708	16.340	326° 22' 23"	15.732	-5.852	-277722.940264	-1109604.830256
52-27	47471.388	-70540.757	3.837	236° 24' 48"	11.483	-12.246	-581334.617448	-810019.512631
52-15	47469.265	-70543.954	16.342	146° 22' 44"	-15.732	5.852	277790.138780	1109797.484328
52-31	47455.656	-70534.905	3.839	56° 22' 34"	-11.483	12.246	581141.963376	809952.314115
							倍面積	-125.455556
							面積	62.7277780
							地積	62.72

## 画地面積(座標法)計算簿

画地番号：52-04

点名	Xn	Yn	距離	方向角	X <sub>n+1</sub> -X <sub>n-1</sub>	Y <sub>n+1</sub> -Y <sub>n-1</sub>	X <sub>n</sub> *(Y <sub>n+1</sub> -Y <sub>n-1</sub> )	Y <sub>n</sub> *(X <sub>n+1</sub> -X <sub>n-1</sub> )
52-27	47471.388	-70540.757	16.340	146° 22' 23"	-21.832	-3.327	-157937.307876	1540045.806824
52-30	47457.782	-70531.708	14.859	56° 22' 04"	-5.376	21.421	1016593.148222	379178.462208
52-29	47466.012	-70519.336	5.776	326° 28' 50"	13.046	9.182	435832.922184	-919995.257456
52-36	47470.828	-70522.526	2.647	326° 19' 19"	7.019	-4.658	-221119.116824	-494997.609994
52-35	47473.031	-70523.994	7.910	326° 19' 12"	8.786	-5.855	-277954.596505	-619623.811284
52-26	47479.614	-70528.381	14.860	236° 23' 21"	-1.643	-16.763	-795900.769482	115878.129983
							倍面積	-485.720281
							面積	242.8601405
							地積	242.86

## 画地面積(座標法)計算簿

画地番号：52-05

点名	Xn	Yn	距離	方向角	X <sub>n+1</sub> -X <sub>n-1</sub>	Y <sub>n+1</sub> -Y <sub>n-1</sub>	X <sub>n</sub> *(Y <sub>n+1</sub> -Y <sub>n-1</sub> )	Y <sub>n</sub> *(X <sub>n+1</sub> -X <sub>n-1</sub> )
52-35	47473.031	-70523.994	18.399	56° 20' 53"	3.613	19.703	935361.129793	-254803.190322
52-34	47483.227	-70508.678	5.089	325° 59' 52"	14.415	12.470	592115.840690	-1016382.593370
52-05	47487.446	-70511.524	4.009	280° 43' 27"	4.965	-6.785	-322202.321110	-350089.716660
52-06	47488.192	-70515.463	15.506	236° 24' 52"	-7.832	-16.857	-800508.452544	552277.106216
52-26	47479.614	-70528.381	7.910	146° 19' 12"	-15.161	-8.531	-405048.587034	1069280.784341
							倍面積	-282.390205
							面積	141.1951025
							地積	141.19

## 画地面積(座標法)計算簿

画地番号：52-06

点名	Xn	Yn	距離	方向角	X <sub>n+1</sub> -X <sub>n-1</sub>	Y <sub>n+1</sub> -Y <sub>n-1</sub>	X <sub>n</sub> *(Y <sub>n+1</sub> -Y <sub>n-1</sub> )	Y <sub>n</sub> *(X <sub>n+1</sub> -X <sub>n-1</sub> )
52-34	47483.227	-70508.678	18.399	236° 20' 53"	-7.983	-16.810	-798193.045870	562870.776474
52-35	47473.031	-70523.994	2.647	146° 19' 19"	-12.399	-13.848	-657406.533288	874427.001606
52-36	47470.828	-70522.526	8.929	56° 26' 30"	2.733	8.909	422917.606652	-192738.063558
52-37	47475.764	-70515.085	9.486	56° 23' 49"	10.186	15.342	728373.171288	-718266.655810
52-33	47481.014	-70507.184	2.670	325° 58' 36"	7.463	6.407	304210.856698	-526195.114192
							倍面積	-97.944520
							面積	48.9722600
							地積	48.97



## 画地面積(座標法)計算簿

画地番号：52-07

点名	Xn	Yn	距離	方向角	X <sub>n+1</sub> -X <sub>n-1</sub>	Y <sub>n+1</sub> -Y <sub>n-1</sub>	X <sub>n</sub> *(Y <sub>n+1</sub> -Y <sub>n-1</sub> )	Y <sub>n</sub> *(X <sub>n+1</sub> -X <sub>n-1</sub> )
52-38	47463.653	-70507.033	14.543	326° 22' 55"	7.195	-16.031	-760889.821243	-507298.102435
52-37	47475.764	-70515.085	9.486	56° 23' 49"	17.361	-0.151	-7168.840364	-1224212.390685
52-33	47481.014	-70507.184	6.868	145° 55' 08"	-0.439	11.750	557901.914500	30952.653776
52-10	47475.325	-70503.335	7.998	147° 38' 21"	-12.445	8.130	385974.392250	877414.004075
52-32	47468.569	-70499.054	9.371	238° 21' 43"	-11.672	-3.698	-175538.768162	822864.958288
							倍面積	278.876981
							面積	139.4384905
							地積	139.43

## 画地面積(座標法)計算簿

画地番号：52-08

点名	Xn	Yn	距離	方向角	X <sub>n+1</sub> -X <sub>n-1</sub>	Y <sub>n+1</sub> -Y <sub>n-1</sub>	X <sub>n</sub> *(Y <sub>n+1</sub> -Y <sub>n-1</sub> )	Y <sub>n</sub> *(X <sub>n+1</sub> -X <sub>n-1</sub> )
52-28	47456.450	-70512.967	11.488	326° 20' 00"	-0.021	-21.882	-1038442.038900	1480.772307
52-29	47466.012	-70519.336	5.776	326° 28' 50"	14.378	-9.559	-453727.608708	-1013927.013008
52-36	47470.828	-70522.526	8.929	56° 26' 30"	9.752	4.251	201798.489828	-687735.673552
52-37	47475.764	-70515.085	14.543	146° 22' 55"	-7.175	15.493	735542.011652	505945.734875
52-38	47463.653	-70507.033	9.371	58° 21' 43"	-7.195	16.031	760889.821243	507298.102435
52-32	47468.569	-70499.054	2.998	147° 45' 06"	2.380	9.579	454701.422451	-167787.748520
52-25	47466.033	-70497.454	18.234	238° 17' 41"	-12.119	-13.913	-660394.917129	854358.645026
							倍面積	367.180437
							面積	183.5902185
							地積	183.59

## 画地面積(座標法)計算簿

画地番号：52-09

点名	Xn	Yn	距離	方向角	X <sub>n+1</sub> -X <sub>n-1</sub>	Y <sub>n+1</sub> -Y <sub>n-1</sub>	X <sub>n</sub> *(Y <sub>n+1</sub> -Y <sub>n-1</sub> )	Y <sub>n</sub> *(X <sub>n+1</sub> -X <sub>n-1</sub> )
52-44	47453.811	-70511.521	8.691	238° 20' 56"	-6.065	-9.839	-466898.046429	427652.374865
52-22	47449.250	-70518.920	8.929	238° 20' 47"	-9.247	-15.000	-711738.750000	652088.453240
52-41	47444.564	-70526.521	0.803	238° 23' 16"	-5.107	-8.285	-393078.212740	360178.942747
52-21	47444.143	-70527.205	13.850	326° 13' 30"	11.092	-8.384	-397771.694912	-782287.757860
52-31	47455.656	-70534.905	3.839	56° 22' 34"	13.639	-4.503	-213692.818968	-962025.569295
52-30	47457.782	-70531.708	14.859	56° 22' 04"	10.356	15.569	738870.207958	-730426.368048
52-29	47466.012	-70519.336	11.488	146° 20' 00"	-1.332	18.741	889560.530892	93931.755552
52-28	47456.450	-70512.967	18.234	58° 17' 41"	0.021	21.882	1038442.038900	-1480.772307
52-25	47466.033	-70497.454	3.001	147° 32' 36"	7.050	17.124	812808.349092	-497007.050700
52-24	47463.500	-70495.843	15.564	238° 16' 18"	-10.718	-11.627	-551858.114500	755574.445274
52-23	47455.315	-70509.081	2.866	238° 21' 02"	-9.689	-15.678	-744004.428570	683162.485809
							倍面積	639.060723
							面積	319.5303615
							地積	319.53

## 画地面積(座標法)計算簿

画地番号：52-10

点名	Xn	Yn	距離	方向角	X <sub>n+1</sub> -X <sub>n-1</sub>	Y <sub>n+1</sub> -Y <sub>n-1</sub>	X <sub>n</sub> *(Y <sub>n+1</sub> -Y <sub>n-1</sub> )	Y <sub>n</sub> *(X <sub>n+1</sub> -X <sub>n-1</sub> )
52-45	47450.842	-70506.319	15.693	58° 16' 18"	3.780	16.110	764433.064620	-266513.885820
52-46	47459.095	-70492.971	0.848	322° 51' 35"	8.929	12.836	609184.943420	-629431.738059
52-09	47459.771	-70493.483	4.413	327° 40' 16"	4.405	-2.872	-136304.462312	-310523.792615
52-24	47463.500	-70495.843	15.564	238° 16' 18"	-4.456	-15.598	-740335.673000	314129.476408
52-23	47455.315	-70509.081	5.257	148° 18' 19"	-12.658	-10.476	-497141.879940	892503.947298
							倍面積	-164.007212
							面積	82.0036060
							地積	82.00

## 画地面積(座標法)計算簿

画地番号：52-11-1

点名	Xn	Yn	距離	方向角	X <sub>n+1</sub> -X <sub>n-1</sub>	Y <sub>n+1</sub> -Y <sub>n-1</sub>	X <sub>n</sub> *(Y <sub>n+1</sub> -Y <sub>n-1</sub> )	Y <sub>n</sub> *(X <sub>n+1</sub> -X <sub>n-1</sub> )
52-47	47443.979	-70502.082	5.521	148° 17' 26"	-13.358	-11.104	-526817.942816	941766.811356
52-14	47439.282	-70499.180	14.057	58° 20' 34"	2.681	14.868	705327.244776	-189008.301580
52-03	47446.660	-70487.214	4.023	9° 31' 40"	11.346	12.632	599346.209120	-799747.930044
52-04	47450.628	-70486.548	2.526	322° 47' 07"	5.980	-0.862	-40902.441336	-421509.557040
52-48	47452.640	-70488.076	16.467	238° 16' 06"	-6.649	-15.534	-737129.309760	468675.217324
							倍面積	-176.240016
							面積	88.1200080
							地積	88.12

## 画地面積(座標法)計算簿

画地番号：52-11-2

点名	X <sub>n</sub>	Y <sub>n</sub>	距離	方向角	X <sub>n+1</sub> -X <sub>n-1</sub>	Y <sub>n+1</sub> -Y <sub>n-1</sub>	X <sub>n</sub> *(Y <sub>n+1</sub> -Y <sub>n-1</sub> )	Y <sub>n</sub> *(X <sub>n+1</sub> -X <sub>n-1</sub> )
52-45	47450.842	-70506.319	8.065	148° 18' 36"	-15.116	-9.111	-432324.621462	1065773.518004
52-47	47443.979	-70502.082	16.467	58° 16' 06"	1.798	18.243	865520.508897	-126762.743436
52-48	47452.640	-70488.076	8.101	322° 49' 34"	15.116	9.111	432341.003040	-1065497.756816
52-46	47459.095	-70492.971	15.693	238° 16' 18"	-1.798	-18.243	-865796.270085	126746.361858
<b>倍面積</b>								-259.379610
<b>面積</b>								129.6898050
<b>地積</b>								129.68

## 画地面積(座標法)計算簿

画地番号：52-12

点名	Xn	Yn	距離	方向角	X <sub>n+1</sub> -X <sub>n-1</sub>	Y <sub>n+1</sub> -Y <sub>n-1</sub>	X <sub>n</sub> *(Y <sub>n+1</sub> -Y <sub>n-1</sub> )	Y <sub>n</sub> *(X <sub>n+1</sub> -X <sub>n-1</sub> )
52-44	47453.811	-70511.521	18.845	148° 18' 07"	-17.538	7.462	354100.337682	1236631.055298
52-43	47437.777	-70501.619	2.865	58° 19' 23"	-14.529	12.341	585429.605957	1024318.022451
52-14	47439.282	-70499.180	13.586	328° 18' 08"	13.065	-4.700	-222964.625400	-921071.786700
52-45	47450.842	-70506.319	5.257	328° 18' 19"	16.033	-9.901	-469810.786642	-1130427.812527
52-23	47455.315	-70509.081	2.866	238° 21' 02"	2.969	-5.202	-246862.548630	-209341.461489
							倍面積	-108.017033
							面積	54.0085165
							地積	54.00

## 画地面積(座標法)計算簿

画地番号：52-13

点名	Xn	Yn	距離	方向角	X <sub>n+1</sub> -X <sub>n-1</sub>	Y <sub>n+1</sub> -Y <sub>n-1</sub>	X <sub>n</sub> *(Y <sub>n+1</sub> -Y <sub>n-1</sub> )	Y <sub>n</sub> *(X <sub>n+1</sub> -X <sub>n-1</sub> )
52-22	47449.250	-70518.920	18.850	148° 18' 03"	-20.599	2.506	118907.820500	1452619.233080
52-13	47433.212	-70509.015	8.691	58° 18' 58"	-11.473	17.301	820642.000812	808949.929095
52-43	47437.777	-70501.619	18.845	328° 18' 07"	20.599	-2.506	-118879.069162	-1452262.849781
52-44	47453.811	-70511.521	8.691	238° 20' 56"	11.473	-17.301	-820998.384111	-808978.680433
<b>倍面積</b>								-327.631961
<b>面積</b>								163.8159805
<b>地積</b>								163.81



## 画地面積(座標法)計算簿

画地番号：52-14

点名	X <sub>n</sub>	Y <sub>n</sub>	距離	方向角	X <sub>n+1</sub> -X <sub>n-1</sub>	Y <sub>n+1</sub> -Y <sub>n-1</sub>	X <sub>n</sub> *(Y <sub>n+1</sub> -Y <sub>n-1</sub> )	Y <sub>n</sub> *(X <sub>n+1</sub> -X <sub>n-1</sub> )
52-13	47433.212	-70509.015	18.850	328° 18' 03"	20.717	-2.325	-110282.217900	-1460735.263755
52-22	47449.250	-70518.920	8.929	238° 20' 47"	11.352	-17.506	-830646.570500	-800530.779840
52-41	47444.564	-70526.521	18.855	148° 14' 07"	-20.717	2.325	110308.611300	1461097.935557
52-42	47428.533	-70516.595	8.907	58° 18' 49"	-11.352	17.506	830283.898698	800504.386440
							倍面積	-336.278402
							面積	168.1392010
							地積	168.13

## 画地面積(座標法)計算簿

画地番号：52-15

点名	Xn	Yn	距離	方向角	X <sub>n+1</sub> -X <sub>n-1</sub>	Y <sub>n+1</sub> -Y <sub>n-1</sub>	X <sub>n</sub> *(Y <sub>n+1</sub> -Y <sub>n-1</sub> )	Y <sub>n</sub> *(X <sub>n+1</sub> -X <sub>n-1</sub> )
52-42	47428.533	-70516.595	18.855	328° 14' 07"	16.839	-8.617	-408691.668861	-1187428.943205
52-41	47444.564	-70526.521	0.803	238° 23' 16"	15.610	-10.610	-503386.824040	-1100918.992810
52-21	47444.143	-70527.205	0.734	239° 12' 37"	-0.797	-1.315	-62389.048045	56210.182385
52-20	47443.767	-70527.836	18.867	148° 14' 14"	-16.418	9.301	441274.476867	1157926.011448
52-12	47427.725	-70517.904	1.538	58° 18' 52"	-15.234	11.241	533135.056725	1074269.749536
							倍面積	-58.007354
							面積	29.0036770
							地積	29.00

## 画地面積(座標法)計算簿

画地番号：52-16

点名	Xn	Yn	距離	方向角	X <sub>n+1</sub> -X <sub>n-1</sub>	Y <sub>n+1</sub> -Y <sub>n-1</sub>	X <sub>n</sub> *(Y <sub>n+1</sub> -Y <sub>n-1</sub> )	Y <sub>n</sub> *(X <sub>n+1</sub> -X <sub>n-1</sub> )
52-40	47442.904	-70529.235	18.866	148° 14' 09"	-16.904	8.533	404830.299832	1192226.188440
52-39	47426.863	-70519.303	1.643	58° 21' 38"	-15.179	11.331	537393.784653	1070412.500237
52-12	47427.725	-70517.904	18.867	328° 14' 14"	16.904	-8.533	-404700.777425	-1192034.649216
52-20	47443.767	-70527.836	1.643	238° 19' 51"	15.179	-11.331	-537585.323877	-1070542.022644
							倍面積	-62.016817
							面積	31.0084085
							地積	31.00

## 画地面積(座標法)計算簿

画地番号：52-17

点名	Xn	Yn	距離	方向角	X <sub>n+1</sub> -X <sub>n-1</sub>	Y <sub>n+1</sub> -Y <sub>n-1</sub>	X <sub>n</sub> *(Y <sub>n+1</sub> -Y <sub>n-1</sub> )	Y <sub>n</sub> *(X <sub>n+1</sub> -X <sub>n-1</sub> )
52-39	47426.863	-70519.303	18.866	328° 14' 09"	25.373	5.208	246999.102504	-1789286.275019
52-40	47442.904	-70529.235	17.808	238° 18' 26"	6.685	-25.085	-1190105.246840	-471487.935975
52-19	47433.548	-70544.388	18.853	148° 09' 49"	-25.373	-5.208	-247033.917984	1789922.756724
52-11	47417.531	-70534.443	17.784	58° 21' 04"	-6.685	25.085	1189468.765135	471522.751455
<b>倍面積</b>								-671.297185
<b>面積</b>								335.6485925
<b>地積</b>								335.64

## 画地面積(座標法)計算簿

画地番号：52-18

点名	Xn	Yn	距離	方向角	X <sub>n+1</sub> -X <sub>n-1</sub>	Y <sub>n+1</sub> -Y <sub>n-1</sub>	X <sub>n</sub> *(Y <sub>n+1</sub> -Y <sub>n-1</sub> )	Y <sub>n</sub> *(X <sub>n+1</sub> -X <sub>n-1</sub> )
52-02	47406.445	-70552.415	4.006	279° 17' 35"	-10.439	-21.926	-1039433.713070	736496.660185
52-01	47407.092	-70556.369	16.181	324° 32' 35"	13.828	-13.341	-632458.014372	-975653.470532
52-17	47420.273	-70565.756	20.325	58° 10' 19"	23.900	7.882	373766.591786	-1686521.568400
52-18	47430.992	-70548.487	4.830	58° 03' 13"	13.275	21.368	1013505.437056	-936531.164925
52-19	47433.548	-70544.388	18.853	148° 09' 49"	-13.461	14.044	666156.748112	949598.006868
52-11	47417.531	-70534.443	21.116	238° 19' 54"	-27.103	-8.027	-380620.521337	1911695.008629
							倍面積	916.528175
							面積	458.2640875
							地積	458.26