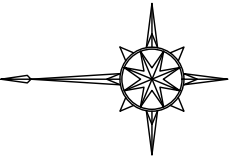
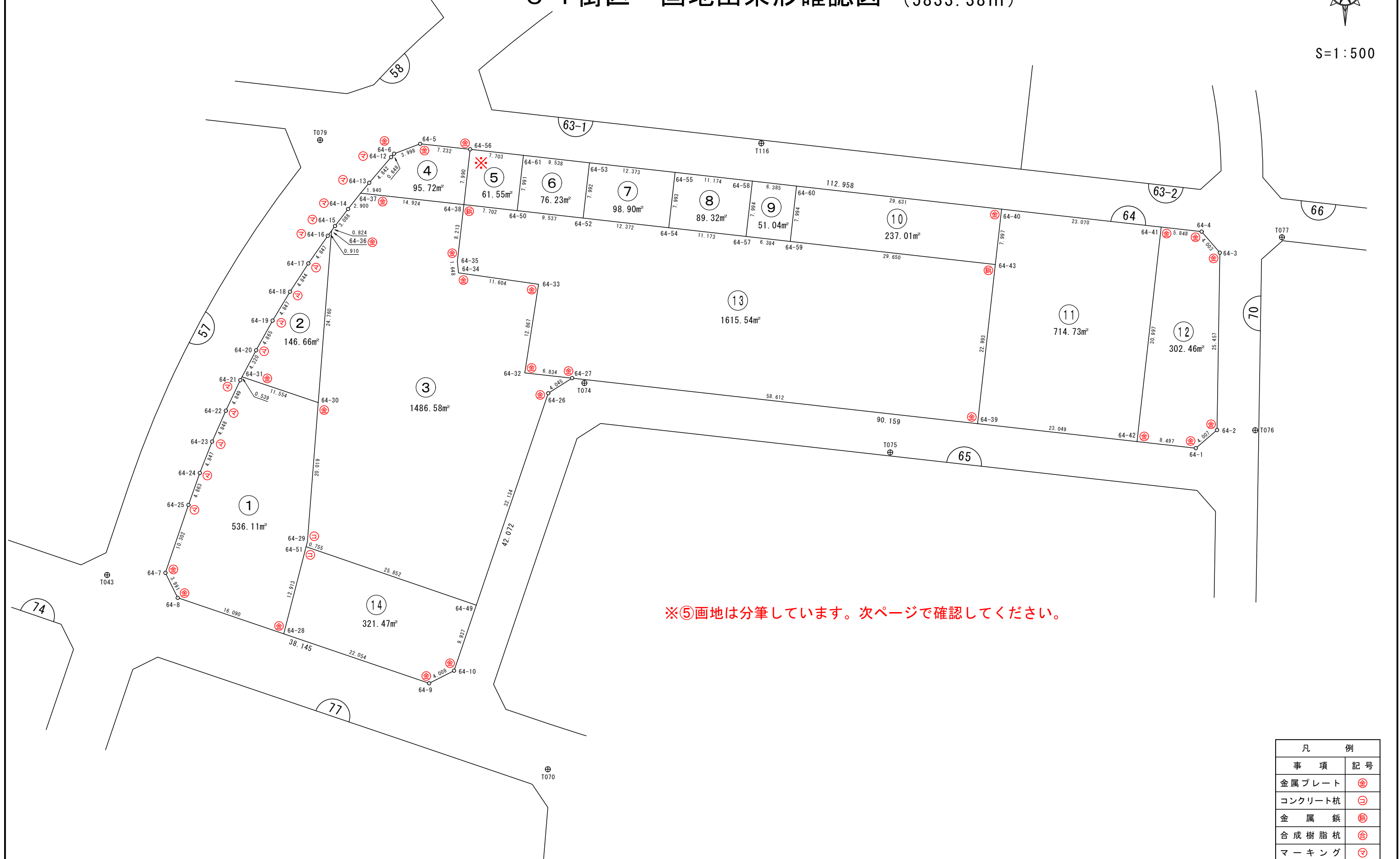


64街区 画地出来形確認図 (5833.38m²)

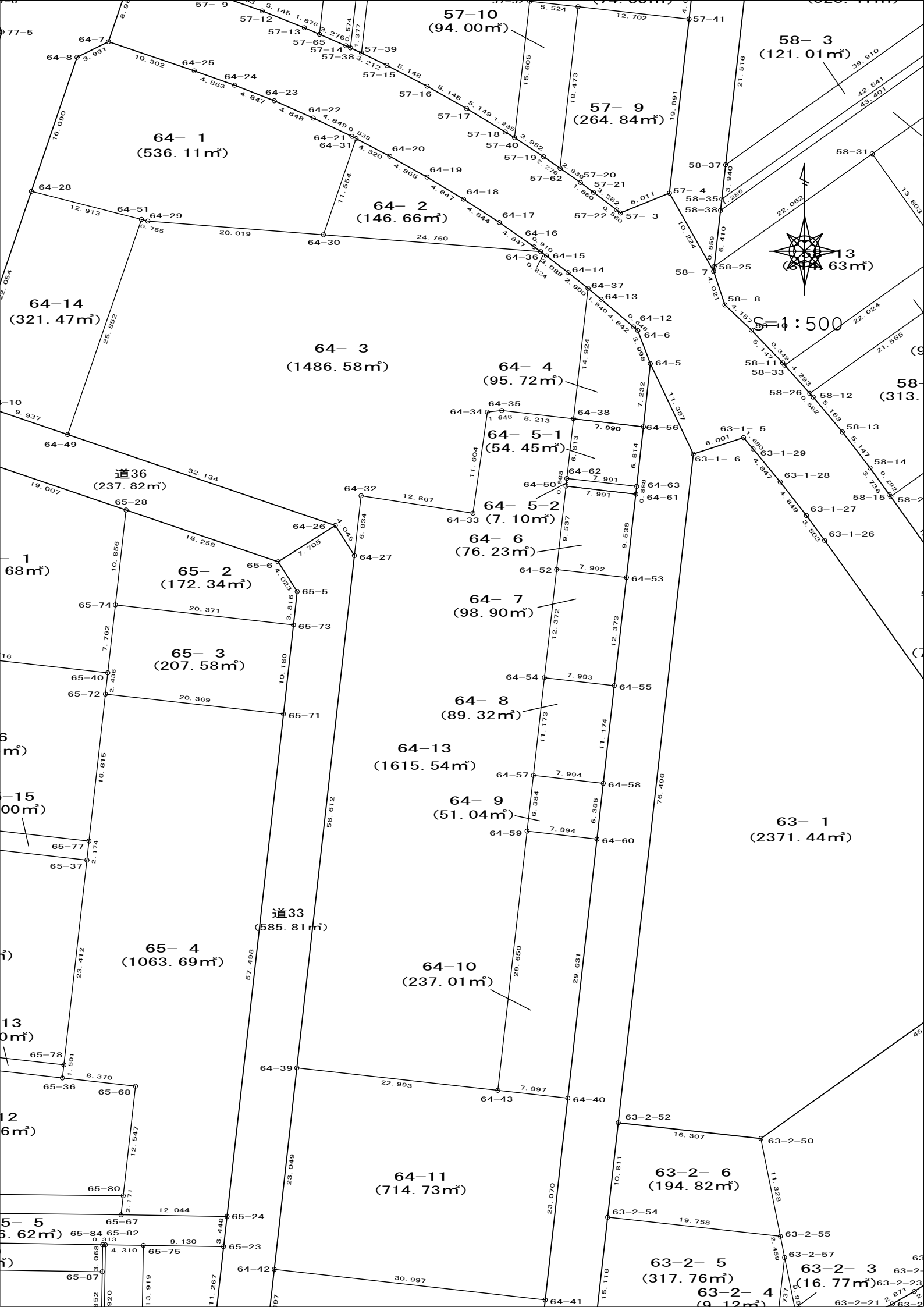


S=1:500



※⑤画地は分筆しています。次ページで確認してください。

凡 例	
事 項	記 号
金属プレート	Ⓜ
コンクリート杭	Ⓜ
金属 鋸	Ⓜ
合成樹脂杭	Ⓜ
マーキング	Ⓜ



64-1
(536.11m²)

57-10
(94.00m²)

58-3
(121.01m²)

57-9
(264.84m²)

64-2
(146.66m²)

58-13
(224.63m²)

64-14
(321.47m²)

64-3
(1486.58m²)

64-4
(95.72m²)

Scale: 1:500

道36
(237.82m²)

64-5-1
(54.45m²)

64-5-2
(7.10m²)

64-6
(76.23m²)

65-2
(172.34m²)

64-7
(98.90m²)

65-3
(207.58m²)

64-13
(1615.54m²)

64-9
(51.04m²)

63-1
(2371.44m²)

65-4
(1063.69m²)

道33
(585.81m²)

64-10
(237.01m²)

65-12
(16m²)

64-11
(714.73m²)

63-2-6
(194.82m²)

65-5
(5.62m²)

63-2-5
(317.76m²)

63-2-3
(16.77m²)

63-2-4
(9.12m²)

画地面積(座標法)計算簿

画地番号：64- 1

点名	Xn	Yn	距離	方向角	X _{n+1} -X _{n-1}	Y _{n+1} -Y _{n-1}	X _n *(Y _{n+1} -Y _{n-1})	Y _n *(X _{n+1} -X _{n-1})
64-31	47473.317	-70891.338	0.539	297° 36' 36"	11.195	3.224	153053.974008	-793628.528910
64-21	47473.567	-70891.816	4.849	295° 20' 40"	2.326	-4.861	-230769.009187	-164894.364016
64-22	47475.643	-70896.199	4.848	293° 57' 32"	4.045	-8.814	-418450.317402	-286775.124955
64-23	47477.612	-70900.630	4.847	291° 24' 54"	3.739	-8.944	-424639.761728	-265097.455570
64-24	47479.382	-70905.143	4.863	289° 34' 03"	3.399	-9.096	-431872.458672	-241006.581057
64-25	47481.011	-70909.726	10.302	288° 46' 09"	4.944	-14.338	-680782.735718	-350577.685344
64-7	47484.326	-70919.481	3.991	243° 40' 44"	1.545	-13.333	-633108.518558	-109570.598145
64-8	47482.556	-70923.059	16.090	198° 46' 58"	-17.004	-8.759	-415899.708004	1205975.695236
64-28	47467.322	-70928.240	12.913	104° 21' 40"	-18.437	7.329	347888.002938	1307703.960880
64-51	47464.119	-70915.730	0.755	104° 29' 47"	-3.392	13.241	628472.399679	240546.156160
64-29	47463.930	-70914.999	20.019	94° 27' 48"	-1.747	20.690	982028.711700	123888.503253
64-30	47462.372	-70895.040	11.554	18° 41' 15"	9.387	23.661	1123007.183892	-665491.740480
							倍面積	-1072.237052
							面積	536.1185260
							地積	536.11

画地面積(座標法)計算簿

画地番号：64- 2

点名	Xn	Yn	距離	方向角	X _{n+1} -X _{n-1}	Y _{n+1} -Y _{n-1}	X _n *(Y _{n+1} -Y _{n-1})	Y _n *(X _{n+1} -X _{n-1})
64-31	47473.317	-70891.338	11.554	198° 41' 15"	-8.926	-7.522	-357094.290474	632776.082988
64-30	47462.372	-70895.040	24.760	94° 25' 43"	-12.857	20.985	995997.876420	911497.529280
64-36	47460.460	-70870.353	0.910	305° 58' 35"	-1.377	23.950	1136678.017000	97588.476081
64-16	47460.995	-70871.090	4.847	305° 08' 56"	3.326	-4.701	-223114.137495	-235717.245340
64-17	47463.786	-70875.054	4.844	302° 58' 42"	5.428	-8.028	-381039.274008	-384709.793112
64-18	47466.423	-70879.118	4.847	301° 03' 25"	5.138	-8.217	-390031.597791	-364176.908284
64-19	47468.924	-70883.271	4.865	299° 12' 16"	4.875	-8.400	-398738.961600	-345555.946125
64-20	47471.298	-70887.518	4.320	297° 51' 29"	4.393	-8.067	-382950.960966	-311408.866574
							倍面積	-293.328914
							面積	146.6644570
							地積	146.66

画地面積(座標法)計算簿

画地番号：64- 3

点名	Xn	Yn	距離	方向角	X _{n+1} -X _{n-1}	Y _{n+1} -Y _{n-1}	X _n *(Y _{n+1} -Y _{n-1})	Y _n *(X _{n+1} -X _{n-1})
64-37	47456.285	-70864.970	2.900	308° 27' 44"	16.638	-0.629	-29850.003265	-1179051.370860
64-14	47458.089	-70867.241	3.088	307° 28' 29"	3.683	-4.722	-224097.096258	-261004.048603
64-15	47459.968	-70869.692	0.824	306° 39' 41"	2.371	-3.112	-147695.420416	-168032.039732
64-36	47460.460	-70870.353	24.760	274° 25' 43"	2.404	-25.348	-1203027.740080	-170372.328612
64-30	47462.372	-70895.040	20.019	274° 27' 48"	3.470	-44.646	-2119005.060312	-246005.788800
64-29	47463.930	-70914.999	0.755	284° 29' 47"	1.747	-20.690	-982028.711700	-123888.503253
64-51	47464.119	-70915.730	25.852	198° 56' 05"	-24.265	-9.120	-432872.765280	1720770.188450
64-49	47439.665	-70924.119	32.134	108° 45' 45"	-34.790	22.038	1045475.337270	2467450.100010
64-26	47429.329	-70893.692	4.045	147° 36' 37"	-13.752	32.594	1545911.549426	974930.052384
64-27	47425.913	-70891.525	6.834	6° 22' 35"	3.376	2.926	138768.221438	-239329.788400
64-32	47432.705	-70890.766	12.867	98° 49' 45"	4.817	13.474	639108.267170	-341480.819822
64-33	47430.730	-70878.051	11.604	8° 07' 28"	9.513	14.355	680868.129150	-674262.899163
64-34	47442.218	-70876.411	1.648	83° 58' 29"	11.661	3.279	155563.032822	-826489.828671
64-35	47442.391	-70874.772	8.213	96° 34' 17"	-0.767	9.799	464887.989409	54360.950124
64-38	47441.451	-70866.612	14.924	6° 18' 59"	13.894	9.802	465021.102702	-984620.707128
							倍面積	-2973.167924
							面積	1486.5839620
							地積	1486.58

画地面積(座標法)計算簿

画地番号：64- 4

点名	Xn	Yn	距離	方向角	X _{n+1} -X _{n-1}	Y _{n+1} -Y _{n-1}	X _n *(Y _{n+1} -Y _{n-1})	Y _n *(X _{n+1} -X _{n-1})
64-37	47456.285	-70864.970	14.924	186° 18' 59"	-13.592	-3.133	-148680.540905	963196.672240
64-38	47441.451	-70866.612	7.990	96° 29' 46"	-15.738	6.297	298738.816947	1115298.739656
64-56	47440.547	-70858.673	7.232	6° 14' 48"	6.286	8.726	413966.213122	-445417.618478
64-5	47447.737	-70857.886	3.998	339° 13' 52"	10.929	-0.631	-29939.522047	-774405.836094
64-6	47451.476	-70859.304	0.648	311° 11' 09"	4.166	-1.906	-90442.513256	-295199.860464
64-12	47451.903	-70859.792	4.842	310° 25' 09"	3.567	-4.175	-198111.695025	-252756.878064
64-13	47455.043	-70863.479	1.940	309° 47' 39"	4.382	-5.178	-245722.212654	-310523.764978
							倍面積	-191.453818
							面積	95.7269090
							地積	95.72

画地面積(座標法)計算簿

画地番号：64- 5-1

点名	Xn	Yn	距離	方向角	X _{n+1} -X _{n-1}	Y _{n+1} -Y _{n-1}	X _n *(Y _{n+1} -Y _{n-1})	Y _n *(X _{n+1} -X _{n-1})
64-56	47440.547	-70858.673	7.990	276° 29' 46"	7.676	-7.176	-340433.365272	-543911.173948
64-38	47441.451	-70866.612	6.813	186° 26' 16"	-5.867	-8.703	-412882.948053	415774.412604
64-62	47434.680	-70867.376	7.991	96° 30' 09"	-7.676	7.176	340391.263680	543977.978176
64-63	47433.775	-70859.436	6.814	6° 25' 42"	5.867	8.703	412816.143825	-415732.311012
倍面積								-108.905820
面積								54.4529100
地積								54.45

画地面積(座標法)計算簿

画地番号：64- 5-2

点名	Xn	Yn	距離	方向角	$X_{n+1}-X_{n-1}$	$Y_{n+1}-Y_{n-1}$	$X_n*(Y_{n+1}-Y_{n-1})$	$Y_n*(X_{n+1}-X_{n-1})$
64-63	47433.775	-70859.436	7.991	276° 30' 09"	1.788	-7.841	-371928.229775	-126696.671568
64-62	47434.680	-70867.376	0.888	186° 23' 50"	0.022	-8.039	-381327.392520	-1559.082272
64-50	47433.797	-70867.475	7.991	96° 30' 09"	-1.788	7.841	371928.402277	126711.045300
64-61	47432.892	-70859.535	0.888	6° 23' 50"	-0.022	8.039	381313.018788	1558.909770
倍面積								-14.201230
面積								7.1006150
地積								7.10

画地面積(座標法)計算簿

画地番号：64- 6

点名	Xn	Yn	距離	方向角	X _{n+1} -X _{n-1}	Y _{n+1} -Y _{n-1}	X _n *(Y _{n+1} -Y _{n-1})	Y _n *(X _{n+1} -X _{n-1})	
64-50	47433.797	-70867.475	9.537	186° 25' 45"	-8.573	-9.008	-427283.643376	607546.863175	
64-52	47424.319	-70868.543	7.992	96° 30' 32"	-10.384	6.873	325947.344487	735898.950512	
64-53	47423.413	-70860.602	9.538	6° 25' 21"	8.573	9.008	427190.104304	-607487.940946	
64-61	47432.892	-70859.535	7.991	276° 30' 09"	10.384	-6.873	-326006.266716	-735805.411440	
								倍面積	-152.461301
								面積	76.2306505
								地積	76.23

画地面積(座標法)計算簿

画地番号：64- 7

点名	X _n	Y _n	距離	方向角	X _{n+1} -X _{n-1}	Y _{n+1} -Y _{n-1}	X _n *(Y _{n+1} -Y _{n-1})	Y _n *(X _{n+1} -X _{n-1})
64-53	47423.413	-70860.602	7.992	276° 30' 32"	13.202	-6.556	-310907.895628	-935501.667604
64-52	47424.319	-70868.543	12.372	186° 25' 54"	-11.389	-9.327	-442326.623313	807121.836227
64-54	47412.024	-70869.929	7.993	96° 30' 54"	-13.202	6.556	310833.229344	935624.802658
64-55	47411.117	-70861.987	12.373	6° 25' 36"	11.389	9.327	442203.488259	-807047.169943
							倍面積	-197.801338
							面積	98.9006690
							地積	98.90

画地面積(座標法)計算簿

画地番号：64- 8

点名	Xn	Yn	距離	方向角	X _{n+1} -X _{n-1}	Y _{n+1} -Y _{n-1}	X _n *(Y _{n+1} -Y _{n-1})	Y _n *(X _{n+1} -X _{n-1})
64-55	47411.117	-70861.987	7.993	276° 30' 54"	12.011	-6.692	-317275.194964	-851123.325857
64-54	47412.024	-70869.929	11.173	186° 25' 43"	-10.196	-9.193	-435858.736632	722589.796084
64-57	47400.921	-70871.180	7.994	96° 31' 17"	-12.011	6.692	317206.963332	851233.742980
64-58	47400.013	-70863.237	11.174	6° 25' 22"	10.196	9.193	435748.319509	-722521.564452
倍面積								-178.648755
面積								89.3243775
地積								89.32

画地面積(座標法)計算簿

画地番号：64- 9

点名	Xn	Yn	距離	方向角	X _{n+1} -X _{n-1}	Y _{n+1} -Y _{n-1}	X _n *(Y _{n+1} -Y _{n-1})	Y _n *(X _{n+1} -X _{n-1})
64-58	47400.013	-70863.237	7.994	276° 31' 17"	7.253	-7.228	-342607.293964	-513971.057961
64-57	47400.921	-70871.180	6.384	186° 25' 49"	-5.436	-8.658	-410397.174018	385255.734480
64-59	47394.577	-70871.895	7.994	96° 31' 43"	-7.253	7.228	342568.002556	514033.854435
64-60	47393.668	-70863.952	6.385	6° 25' 46"	5.436	8.658	410334.377544	-385216.443072
倍面積								-102.087882
面積								51.0439410
地積								51.04

画地面積(座標法)計算簿

画地番号：64-10

点名	X _n	Y _n	距離	方向角	X _{n+1} -X _{n-1}	Y _{n+1} -Y _{n-1}	X _n *(Y _{n+1} -Y _{n-1})	Y _n *(X _{n+1} -X _{n-1})
64-59	47394.577	-70871.895	29.650	186° 25' 51"	-28.555	-11.264	-533852.515328	2023746.961725
64-43	47365.113	-70875.216	7.997	96° 23' 21"	-30.354	4.627	219158.377851	2151346.306464
64-40	47364.223	-70867.268	29.631	6° 25' 31"	28.555	11.264	533510.607872	-2023614.837740
64-60	47393.668	-70863.952	7.994	276° 31' 43"	30.354	-4.627	-219290.501836	-2151004.399008
							倍面積	-474.031441
							面積	237.0157205
							地積	237.01

画地面積(座標法)計算簿

画地番号：64-11

点名	Xn	Yn	距離	方向角	X _{n+1} -X _{n-1}	Y _{n+1} -Y _{n-1}	X _n *(Y _{n+1} -Y _{n-1})	Y _n *(X _{n+1} -X _{n-1})
64-39	47367.667	-70898.067	23.049	186° 23' 57"	-20.352	-25.420	-1204086.095140	1442917.459584
64-42	47344.761	-70900.636	30.997	96° 25' 05"	-26.371	28.234	1336731.982074	1869720.671956
64-41	47341.296	-70869.833	23.070	6° 23' 01"	19.462	33.368	1579684.364928	-1379268.689846
64-40	47364.223	-70867.268	7.997	276° 23' 21"	23.817	-5.383	-254961.612409	-1687845.721956
64-43	47365.113	-70875.216	22.993	276° 22' 38"	3.444	-30.799	-1458798.115287	-244094.243904
							倍面積	-1429.475834
							面積	714.7379170
							地積	714.73

画地面積(座標法)計算簿

画地番号：64-12

点名	Xn	Yn	距離	方向角	X _{n+1} -X _{n-1}	Y _{n+1} -Y _{n-1}	X _n *(Y _{n+1} -Y _{n-1})	Y _n *(X _{n+1} -X _{n-1})
64-41	47341.296	-70869.833	30.997	276° 25' 05"	9.277	-30.149	-1427292.733104	-657459.440741
64-42	47344.761	-70900.636	8.497	186° 22' 41"	-4.980	-31.747	-1503054.127467	353085.167280
64-1	47336.316	-70901.580	4.007	139° 25' 19"	-11.489	1.663	78720.293508	814588.252620
64-2	47333.272	-70898.973	25.457	90° 54' 25"	-3.447	28.061	1328218.945592	244388.759931
64-3	47332.869	-70873.519	4.003	49° 13' 24"	2.212	28.486	1348324.106334	-156772.224028
64-4	47335.484	-70870.487	5.848	6° 25' 13"	8.427	3.686	174478.594024	-597225.593949
							倍面積	-604.921113
							面積	302.4605565
							地積	302.46

画地面積(座標法)計算簿

画地番号：64-13

点名	X _n	Y _n	距離	方向角	X _{n+1} -X _{n-1}	Y _{n+1} -Y _{n-1}	X _n *(Y _{n+1} -Y _{n-1})	Y _n *(X _{n+1} -X _{n-1})
64-38	47441.451	-70866.612	8.213	276° 34' 17"	7.711	-7.396	-350876.971596	-546452.445132
64-35	47442.391	-70874.772	1.648	263° 58' 29"	0.767	-9.799	-464887.989409	-54360.950124
64-34	47442.218	-70876.411	11.604	188° 07' 28"	-11.661	-3.279	-155563.032822	826489.828671
64-33	47430.730	-70878.051	12.867	278° 49' 45"	-9.513	-14.355	-680868.129150	674262.899163
64-32	47432.705	-70890.766	6.834	186° 22' 35"	-4.817	-13.474	-639108.267170	341480.819822
64-27	47425.913	-70891.525	58.612	186° 24' 30"	-65.038	-7.301	-346256.590813	4610643.002950
64-39	47367.667	-70898.067	22.993	96° 22' 38"	-60.800	16.309	772519.281103	4310602.473600
64-43	47365.113	-70875.216	29.650	6° 25' 51"	26.910	26.172	1239639.737436	-1907252.062560
64-59	47394.577	-70871.895	6.384	6° 25' 49"	35.808	4.036	191284.512772	-2537780.816160
64-57	47400.921	-70871.180	11.173	6° 25' 43"	17.447	1.966	93190.210686	-1236489.477460
64-54	47412.024	-70869.929	12.372	6° 25' 54"	23.398	2.637	125025.507288	-1658214.598742
64-52	47424.319	-70868.543	9.537	6° 25' 45"	21.773	2.454	116379.278826	-1543020.786739
64-50	47433.797	-70867.475	0.888	6° 23' 50"	10.361	1.167	55355.241099	-734257.908475
64-62	47434.680	-70867.376	6.813	6° 26' 16"	7.654	0.863	40936.128840	-542418.895904
							倍面積	-3231.082910
							面積	1615.5414550
							地積	1615.54

画地面積(座標法)計算簿

画地番号：64-14

点名	Xn	Yn	距離	方向角	X _{n+1} -X _{n-1}	Y _{n+1} -Y _{n-1}	X _n *(Y _{n+1} -Y _{n-1})	Y _n *(X _{n+1} -X _{n-1})
64-28	47467.322	-70928.240	22.054	198° 45' 49"	-17.679	-19.604	-930549.380488	1253940.354960
64-9	47446.440	-70935.334	4.008	153° 14' 12"	-24.461	-5.289	-250944.221160	1735149.204974
64-10	47442.861	-70933.529	9.937	108° 45' 34"	-6.775	11.215	532071.686115	480574.658975
64-49	47439.665	-70924.119	25.852	18° 56' 05"	21.258	17.799	844378.597335	-1507704.921702
64-51	47464.119	-70915.730	12.913	284° 21' 40"	27.657	-4.121	-195599.634399	-1961316.344610
							倍面積	-642.952597
							面積	321.4762985
							地積	321.47