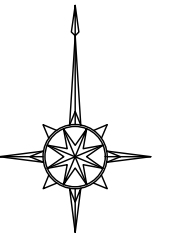
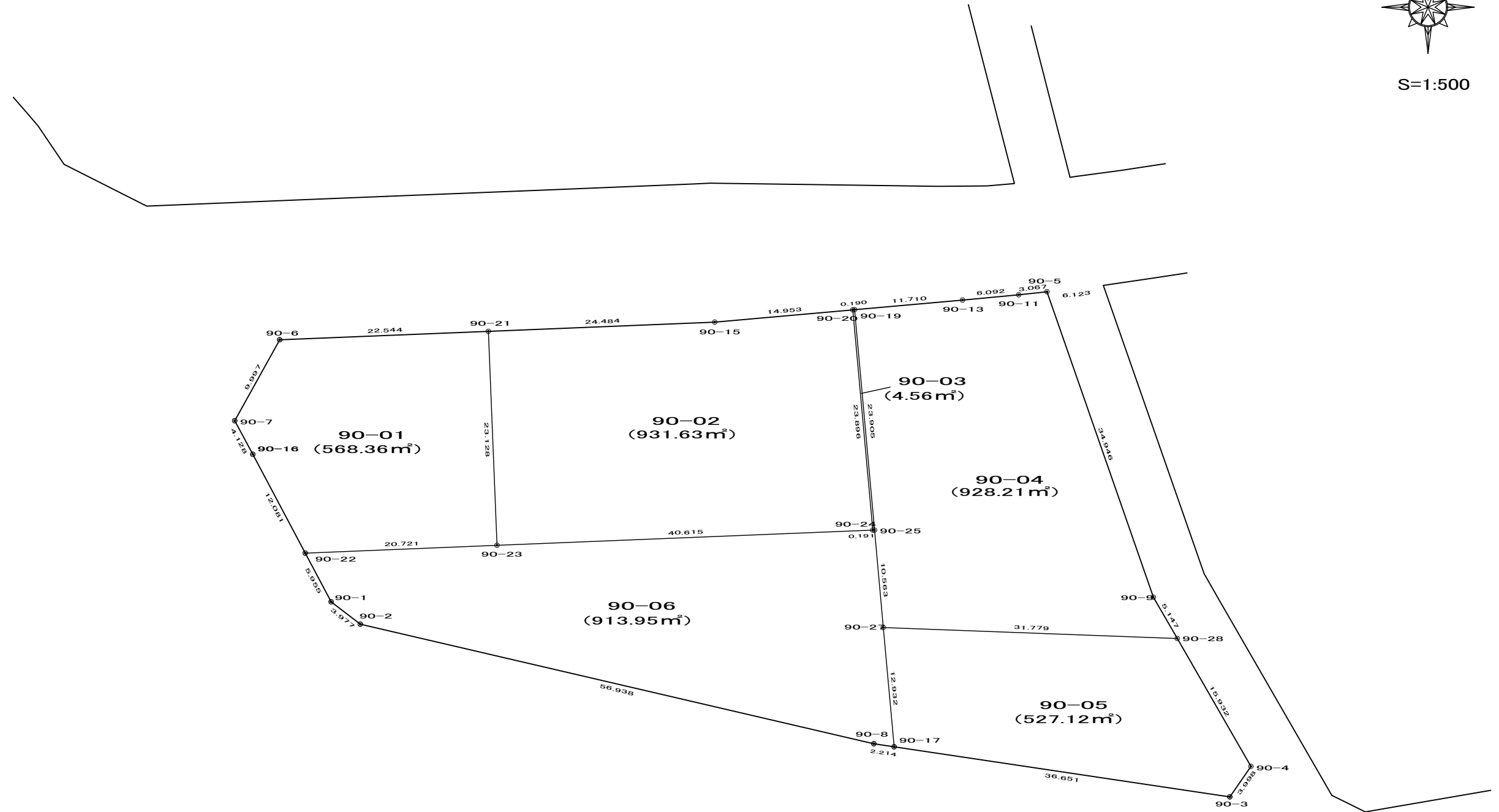


90街区 出来形確認測量図



S=1:500



画地面積(座標法)計算簿

画地番号：90-01

点名	X _n	Y _n	距離	方向角	X _{n+1} -X _{n-1}	Y _{n+1} -Y _{n-1}	X _n *(Y _{n+1} -Y _{n-1})	Y _n *(X _{n+1} -X _{n-1})
90-6	47181.647	-70891.653	9.997	209° 03' 17"	-9.647	-27.381	-1291880.676507	683891.776491
90-7	47172.908	-70896.508	4.128	151° 45' 10"	-12.376	-2.901	-136848.606108	877415.183008
90-16	47169.271	-70894.554	12.081	152° 04' 31"	-14.312	7.612	359052.490852	1014642.856848
90-22	47158.596	-70888.896	20.721	87° 39' 07"	-9.826	26.362	1243194.907752	696554.292096
90-23	47159.445	-70868.192	23.128	357° 40' 59"	23.959	19.769	932295.068205	-1697931.012128
90-21	47182.555	-70869.127	22.544	267° 41' 30"	22.202	-23.461	-1106949.922855	-1573436.357654
							倍面積	-1136.738661
							面積	568.3693305
							地積	568.36

画地面積(座標法)計算簿

画地番号：90-02

点名	Xn	Yn	距離	方向角	X _{n+1} -X _{n-1}	Y _{n+1} -Y _{n-1}	X _n *(Y _{n+1} -Y _{n-1})	Y _n *(X _{n+1} -X _{n-1})
90-24	47161.079	-70827.609	23.896	354° 48' 51"	25.433	38.423	1812070.138417	-1801358.579697
90-20	47184.878	-70829.769	14.953	264° 53' 22"	22.467	-17.054	-804690.909412	-1591332.420123
90-15	47183.546	-70844.663	24.484	267° 40' 49"	-2.323	-39.358	-1857050.003468	164572.152149
90-21	47182.555	-70869.127	23.128	177° 40' 59"	-24.101	-23.529	-1110158.336595	1708016.829827
90-23	47159.445	-70868.192	40.615	87° 41' 40"	-21.476	41.518	1957965.837510	1521965.291392
							倍面積	-1863.273548
							面積	931.6367740
							地積	931.63

画地面積(座標法)計算簿

画地番号：90-03

点名	Xn	Yn	距離	方向角	X _{n+1} -X _{n-1}	Y _{n+1} -Y _{n-1}	X _n *(Y _{n+1} -Y _{n-1})	Y _n *(X _{n+1} -X _{n-1})
90-20	47184.878	-70829.769	23.896	174° 48' 51"	-23.816	1.970	92954.209660	1686881.778504
90-24	47161.079	-70827.609	0.191	87° 36' 06"	-23.791	2.351	110875.696729	1685059.645719
90-25	47161.087	-70827.418	23.905	354° 48' 49"	23.816	-1.970	-92907.341390	-1686825.787088
90-19	47184.895	-70829.579	0.190	264° 53' 14"	23.791	-2.351	-110931.688145	-1685106.513989
							倍面積	-9.123146
							面積	4.5615730
							地積	4.56

画地面積(座標法)計算簿

画地番号：90-04

点名	Xn	Yn	距離	方向角	X _{n+1} -X _{n-1}	Y _{n+1} -Y _{n-1}	X _n *(Y _{n+1} -Y _{n-1})	Y _n *(X _{n+1} -X _{n-1})
90-5	47186.831	-70808.799	3.067	263° 53' 57"	32.676	-14.546	-686379.643726	-2313748.316124
90-11	47186.505	-70811.849	6.092	264° 33' 56"	-0.903	-9.115	-430104.993075	63943.099647
90-13	47185.928	-70817.914	11.710	264° 56' 22"	-1.610	-17.730	-836606.503440	114016.841540
90-19	47184.895	-70829.579	23.905	174° 48' 49"	-24.841	-9.504	-448445.242080	1759477.571939
90-25	47161.087	-70827.418	10.563	174° 54' 01"	-34.330	3.100	146199.369700	2431505.259940
90-27	47150.565	-70826.479	31.779	92° 08' 46"	-11.712	32.696	1541634.873240	829519.722048
90-28	47149.375	-70794.722	5.147	329° 54' 31"	3.264	29.176	1375630.165000	-231073.972608
90-9	47153.829	-70797.303	34.946	340° 47' 41"	37.456	-14.077	-663784.450833	-2651783.781168
							倍面積	-1856.425214
							面積	928.2126070
							地積	928.21

画地面積(座標法)計算簿

画地番号：90-05

点名	Xn	Yn	距離	方向角	X _{n+1} -X _{n-1}	Y _{n+1} -Y _{n-1}	X _n *(Y _{n+1} -Y _{n-1})	Y _n *(X _{n+1} -X _{n-1})
90-27	47150.565	-70826.479	12.932	174° 45' 54"	-11.689	-30.577	-1441722.826005	827890.713031
90-17	47137.686	-70825.299	36.651	98° 29' 12"	-18.288	37.430	1764363.586980	1295253.068112
90-3	47132.277	-70789.049	3.998	34° 39' 35"	-2.120	38.524	1815723.839148	150072.783880
90-4	47135.566	-70786.775	15.932	330° 04' 47"	17.098	-5.673	-267400.065918	-1210312.278950
90-28	47149.375	-70794.722	31.779	272° 08' 46"	14.999	-39.704	-1872018.785000	-1061850.035278
							倍面積	-1054.250795
							面積	527.1253975
							地積	527.12

画地面積(座標法)計算簿

画地番号：90-06

点名	X _n	Y _n	距離	方向角	X _{n+1} -X _{n-1}	Y _{n+1} -Y _{n-1}	X _n *(Y _{n+1} -Y _{n-1})	Y _n *(X _{n+1} -X _{n-1})
90-25	47161.087	-70827.418	0.191	267° 36' 06"	10.514	-1.130	-53292.028310	-744679.472852
90-24	47161.079	-70827.609	40.615	267° 41' 40"	-1.642	-40.774	-1922945.835146	116298.933978
90-23	47159.445	-70868.192	20.721	267° 39' 07"	-2.483	-61.287	-2890260.905715	175965.720736
90-22	47158.596	-70888.896	5.955	152° 02' 27"	-6.109	-17.912	-844704.771552	433060.265664
90-1	47153.336	-70886.104	3.977	127° 26' 25"	-7.678	5.950	280562.349200	544263.506512
90-2	47150.918	-70882.946	56.938	103° 05' 49"	-15.320	58.615	2763751.058570	1085926.732720
90-8	47138.016	-70827.489	2.214	98° 34' 09"	-13.232	57.647	2717365.208352	937189.334448
90-17	47137.686	-70825.299	12.932	354° 45' 54"	12.549	1.010	47609.062860	-888786.677151
90-27	47150.565	-70826.479	10.563	354° 54' 01"	23.401	-2.119	-99912.047235	-1657410.435079
							倍面積	-1827.908976
							面積	913.9544880
							地積	913.95