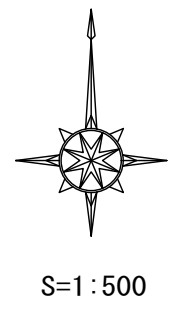


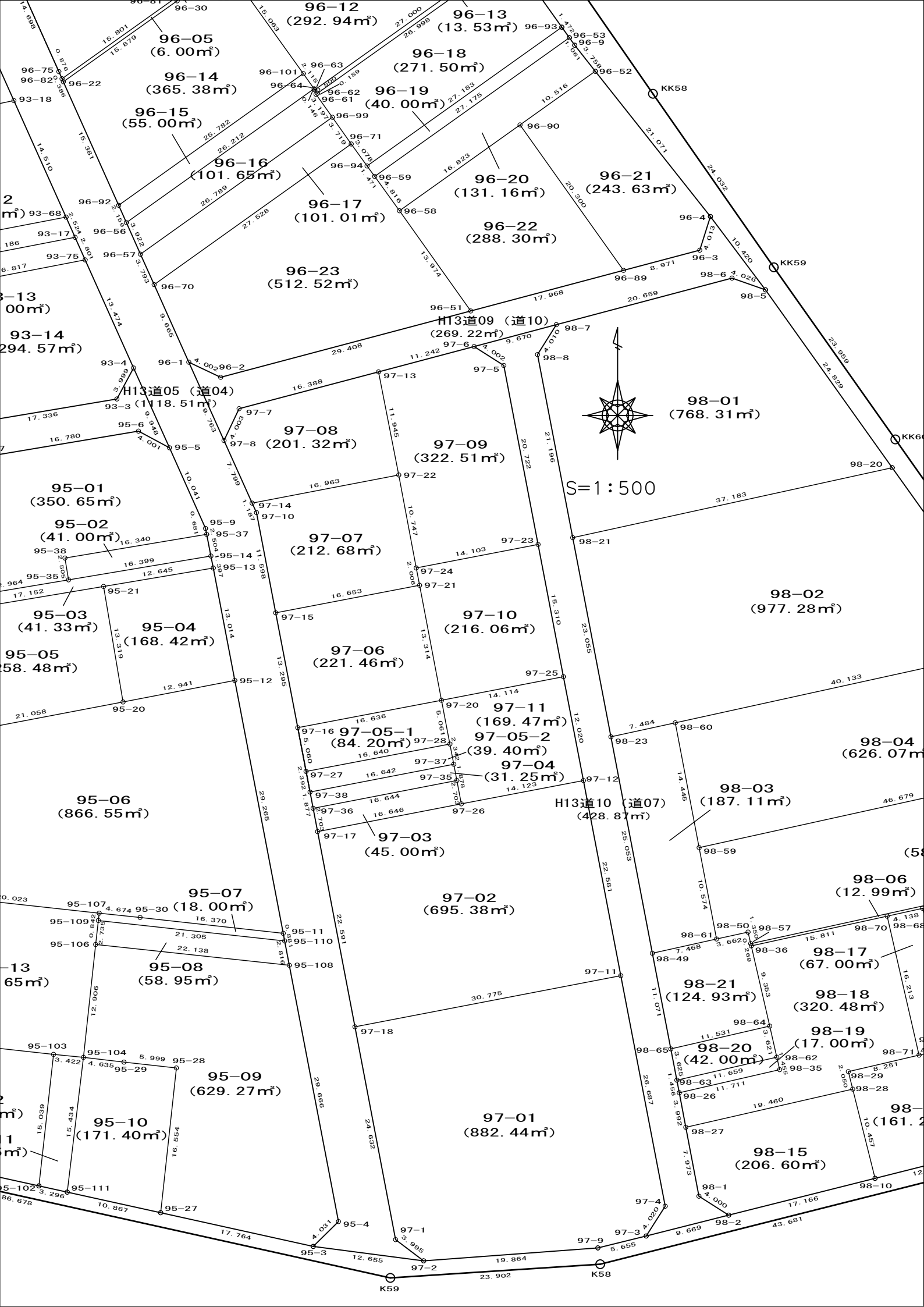
# 97街区 画地出来形確認図 (3121.21㎡)



※⑤画地は分筆しています。次ページで確認してください。



凡 例	
種 類	記 号
プレート	⊠
鋳	⊗
コンクリート杭	⊞
合成杭	□
刻 印	△



96-05  
(6.00m<sup>2</sup>)

96-14  
(365.38m<sup>2</sup>)

96-15  
(55.00m<sup>2</sup>)

96-16  
(101.65m<sup>2</sup>)

96-17  
(101.01m<sup>2</sup>)

96-23  
(512.52m<sup>2</sup>)

93-13  
(100.00m<sup>2</sup>)

93-14  
(294.57m<sup>2</sup>)

H13道05 (道04)  
(1118.51m<sup>2</sup>)

97-08  
(201.32m<sup>2</sup>)

97-09  
(322.51m<sup>2</sup>)

95-01  
(350.65m<sup>2</sup>)

95-02  
(41.00m<sup>2</sup>)

95-03  
(41.33m<sup>2</sup>)

95-04  
(168.42m<sup>2</sup>)

95-05  
(58.48m<sup>2</sup>)

97-07  
(212.68m<sup>2</sup>)

97-10  
(216.06m<sup>2</sup>)

97-06  
(221.46m<sup>2</sup>)

95-06  
(866.55m<sup>2</sup>)

97-05-1  
(84.20m<sup>2</sup>)

97-05-2  
(39.40m<sup>2</sup>)

97-04  
(31.25m<sup>2</sup>)

97-03  
(45.00m<sup>2</sup>)

97-02  
(695.38m<sup>2</sup>)

95-07  
(18.00m<sup>2</sup>)

95-08  
(58.95m<sup>2</sup>)

95-09  
(629.27m<sup>2</sup>)

95-10  
(171.40m<sup>2</sup>)

97-01  
(882.44m<sup>2</sup>)

98-01  
(768.31m<sup>2</sup>)

98-02  
(977.28m<sup>2</sup>)

98-04  
(626.07m<sup>2</sup>)

98-03  
(187.11m<sup>2</sup>)

98-06  
(12.99m<sup>2</sup>)

98-21  
(124.93m<sup>2</sup>)

98-17  
(67.00m<sup>2</sup>)

98-18  
(320.48m<sup>2</sup>)

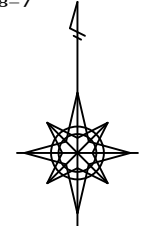
98-19  
(17.00m<sup>2</sup>)

98-20  
(42.00m<sup>2</sup>)

98-15  
(206.60m<sup>2</sup>)

H13道09 (道10)  
(269.22m<sup>2</sup>)

H13道10 (道07)  
(428.87m<sup>2</sup>)



S=1:500

## 画地面積(座標法)計算簿

画地番号：97-01

点名	X <sub>n</sub>	Y <sub>n</sub>	距離	方向角	X <sub>n+1</sub> -X <sub>n-1</sub>	Y <sub>n+1</sub> -Y <sub>n-1</sub>	X <sub>n</sub> *(Y <sub>n+1</sub> -Y <sub>n-1</sub> )	Y <sub>n</sub> *(X <sub>n+1</sub> -X <sub>n-1</sub> )
97-11	47153.616	-70518.957	30.775	259° 06' 24"	20.389	-35.272	-1663202.343552	-1437811.014273
97-18	47147.800	-70549.178	24.632	169° 11' 06"	-30.011	-25.599	-1206936.532200	2117251.380958
97-1	47123.605	-70544.556	3.995	127° 11' 18"	-26.610	7.805	367799.737025	1877190.635160
97-2	47121.190	-70541.373	19.864	85° 43' 48"	-0.936	22.992	1083410.400480	66026.725128
97-9	47122.669	-70521.564	5.655	76° 08' 18"	2.834	25.300	1192203.525700	-199858.112376
97-3	47124.024	-70516.073	4.020	32° 36' 40"	4.742	7.658	360875.775792	-334387.218166
97-4	47127.411	-70513.906	26.687	349° 05' 24"	29.592	-2.884	-135915.453324	-2086647.506352
							倍面積	-1764.890079
							面積	882.4450395
							地積	882.44

## 画地面積(座標法)計算簿

画地番号：97-02

点名	Xn	Yn	距離	方向角	X <sub>n+1</sub> -X <sub>n-1</sub>	Y <sub>n+1</sub> -Y <sub>n-1</sub>	X <sub>n</sub> *(Y <sub>n+1</sub> -Y <sub>n-1</sub> )	Y <sub>n</sub> *(X <sub>n+1</sub> -X <sub>n-1</sub> )
97-12	47175.794	-70523.207	14.123	259° 12' 37"	19.534	-18.124	-855014.090456	-1377600.325538
97-26	47173.150	-70537.081	16.646	259° 03' 14"	-5.805	-30.218	-1425478.246700	409467.755205
97-17	47169.989	-70553.425	22.591	169° 09' 52"	-25.350	-12.097	-570615.356933	1788529.323750
97-18	47147.800	-70549.178	30.775	79° 06' 24"	-16.373	34.468	1625090.370400	1155101.691394
97-11	47153.616	-70518.957	22.581	349° 09' 07"	27.994	25.971	1224626.561136	-1974107.682258
							倍面積	-1390.762553
							面積	695.3812765
							地積	695.38

## 画地面積(座標法)計算簿

画地番号：97-03

点名	X <sub>n</sub>	Y <sub>n</sub>	距離	方向角	X <sub>n+1</sub> -X <sub>n-1</sub>	Y <sub>n+1</sub> -Y <sub>n-1</sub>	X <sub>n</sub> *(Y <sub>n+1</sub> -Y <sub>n-1</sub> )	Y <sub>n</sub> *(X <sub>n+1</sub> -X <sub>n-1</sub> )
97-35	47175.805	-70537.589	16.644	259° 03' 21"	-0.505	-16.850	-794912.314250	35621.482445
97-36	47172.645	-70553.931	2.703	169° 12' 49"	-5.816	-15.836	-747026.006220	410341.662696
97-17	47169.989	-70553.425	16.646	79° 03' 14"	0.505	16.850	794814.314650	-35629.479625
97-26	47173.150	-70537.081	2.703	349° 10' 05"	5.816	15.836	747034.003400	-410243.663096
							倍面積	-90.002420
							面積	45.0012100
							地積	45.00

## 画地面積(座標法)計算簿

画地番号：97-04

点名	Xn	Yn	距離	方向角	X <sub>n+1</sub> -X <sub>n-1</sub>	Y <sub>n+1</sub> -Y <sub>n-1</sub>	X <sub>n</sub> *(Y <sub>n+1</sub> -Y <sub>n-1</sub> )	Y <sub>n</sub> *(X <sub>n+1</sub> -X <sub>n-1</sub> )
97-37	47177.650	-70537.943	16.642	259° 03' 05"	-1.316	-16.694	-787583.689100	92827.932988
97-38	47174.489	-70554.283	1.877	169° 11' 34"	-5.005	-15.988	-754225.730132	353124.186415
97-36	47172.645	-70553.931	16.644	79° 03' 21"	1.316	16.694	787500.135630	-92848.973196
97-35	47175.805	-70537.589	1.878	349° 08' 19"	5.005	15.988	754246.770340	-353040.632945
							倍面積	-62.513262
							面積	31.2566310
							地積	31.25

## 画地面積(座標法)計算簿

画地番号：97-05-1

点名	X <sub>n</sub>	Y <sub>n</sub>	距離	方向角	X <sub>n+1</sub> -X <sub>n-1</sub>	Y <sub>n+1</sub> -Y <sub>n-1</sub>	X <sub>n</sub> *(Y <sub>n+1</sub> -Y <sub>n-1</sub> )	Y <sub>n</sub> *(X <sub>n+1</sub> -X <sub>n-1</sub> )
97-16	47181.810	-70555.679	5.060	169° 12' 11"	-8.083	-15.395	-726363.964950	570301.553357
97-27	47176.839	-70554.731	16.640	79° 13' 17"	-1.859	17.295	815923.430505	131161.244929
97-28	47179.951	-70538.384	5.061	349° 09' 31"	8.083	15.395	726335.345645	-570161.757872
97-20	47184.922	-70539.336	16.636	259° 13' 08"	1.859	-17.295	-816063.225990	-131132.625624
							倍面積	-168.414790
							面積	84.2073950
							地積	84.20

## 画地面積(座標法)計算簿

画地番号：97-05-2

点名	Xn	Yn	距離	方向角	X <sub>n+1</sub> -X <sub>n-1</sub>	Y <sub>n+1</sub> -Y <sub>n-1</sub>	X <sub>n</sub> *(Y <sub>n+1</sub> -Y <sub>n-1</sub> )	Y <sub>n</sub> *(X <sub>n+1</sub> -X <sub>n-1</sub> )
97-27	47176.839	-70554.731	2.392	169° 12' 24"	-5.462	-15.899	-750064.563261	385369.940722
97-38	47174.489	-70554.283	16.642	79° 03' 05"	0.811	16.788	791965.321332	-57219.523513
97-37	47177.650	-70537.943	2.342	349° 09' 02"	5.462	15.899	750077.457350	-385278.244666
97-28	47179.951	-70538.384	16.640	259° 13' 17"	-0.811	-16.788	-792057.017388	57206.629424
<b>倍面積</b>								-78.801967
<b>面積</b>								39.4009835
<b>地積</b>								39.40



## 画地面積(座標法)計算簿

画地番号：97-06

点名	Xn	Yn	距離	方向角	X <sub>n+1</sub> -X <sub>n-1</sub>	Y <sub>n+1</sub> -Y <sub>n-1</sub>	X <sub>n</sub> *(Y <sub>n+1</sub> -Y <sub>n-1</sub> )	Y <sub>n</sub> *(X <sub>n+1</sub> -X <sub>n-1</sub> )
97-21	47198.000	-70541.834	16.653	259° 09' 11"	9.944	-18.854	-889871.092000	-701467.997296
97-15	47194.866	-70558.190	13.295	169° 06' 49"	-16.190	-13.845	-653412.919770	1142337.096100
97-16	47181.810	-70555.679	16.636	79° 13' 08"	-9.944	18.854	889565.845740	701605.671976
97-20	47184.922	-70539.336	13.314	349° 11' 11"	16.190	13.845	653275.245090	-1142031.849840
							倍面積	-442.920940
							面積	221.4604700
							地積	221.46

## 画地面積(座標法)計算簿

画地番号：97-07

点名	Xn	Yn	距離	方向角	X <sub>n+1</sub> -X <sub>n-1</sub>	Y <sub>n+1</sub> -Y <sub>n-1</sub>	X <sub>n</sub> *(Y <sub>n+1</sub> -Y <sub>n-1</sub> )	Y <sub>n</sub> *(X <sub>n+1</sub> -X <sub>n-1</sub> )
97-22	47210.531	-70544.205	16.963	259° 08' 50"	7.367	-18.652	-880570.824212	-519699.158235
97-14	47207.337	-70560.865	1.187	155° 27' 51"	-4.274	-16.167	-763201.017279	301577.137010
97-10	47206.257	-70560.372	11.598	169° 09' 22"	-12.471	2.675	126276.737475	879958.399212
97-15	47194.866	-70558.190	16.653	79° 09' 11"	-8.257	18.538	874898.425908	582598.974830
97-21	47198.000	-70541.834	2.006	349° 06' 37"	5.104	15.977	754082.446000	-360045.520736
97-24	47199.970	-70542.213	10.747	349° 19' 06"	12.531	-2.371	-111911.128870	-883964.471103
							倍面積	-425.360978
							面積	212.6804890
							地積	212.68

## 画地面積(座標法)計算簿

画地番号：97-08

点名	X <sub>n</sub>	Y <sub>n</sub>	距離	方向角	X <sub>n+1</sub> -X <sub>n-1</sub>	Y <sub>n+1</sub> -Y <sub>n-1</sub>	X <sub>n</sub> *(Y <sub>n+1</sub> -Y <sub>n-1</sub> )	Y <sub>n</sub> *(X <sub>n+1</sub> -X <sub>n-1</sub> )
97-7	47218.069	-70562.344	4.003	205° 23' 38"	-7.802	-17.562	-829243.727778	550527.407888
97-8	47214.452	-70564.061	7.799	155° 48' 39"	-10.732	1.479	69830.174508	757293.502652
97-14	47207.337	-70560.865	16.963	79° 08' 50"	-3.921	19.856	937348.883472	276669.151665
97-22	47210.531	-70544.205	11.945	348° 55' 41"	14.917	14.366	678226.488346	-1052307.905985
97-13	47222.254	-70546.499	16.388	255° 12' 17"	7.538	-18.139	-856564.465306	-531779.509462
							倍面積	-402.646758
							面積	201.3233790
							地積	201.32

## 画地面積(座標法)計算簿

画地番号：97-09

点名	X <sub>n</sub>	Y <sub>n</sub>	距離	方向角	X <sub>n+1</sub> -X <sub>n-1</sub>	Y <sub>n+1</sub> -Y <sub>n-1</sub>	X <sub>n</sub> *(Y <sub>n+1</sub> -Y <sub>n-1</sub> )	Y <sub>n</sub> *(X <sub>n+1</sub> -X <sub>n-1</sub> )
97-5	47222.988	-70532.254	4.002	302° 26' 22"	22.501	-7.269	-343263.899772	-1587046.247254
97-6	47225.135	-70535.632	11.242	255° 09' 06"	-0.734	-14.245	-672722.048075	51773.153888
97-13	47222.254	-70546.499	11.945	168° 55' 41"	-14.604	-8.573	-404836.383542	1030261.071396
97-22	47210.531	-70544.205	10.747	169° 19' 06"	-22.284	4.286	202344.335866	1572007.064220
97-24	47199.970	-70542.213	14.103	79° 06' 44"	-7.897	15.842	747741.924740	557071.856061
97-23	47202.634	-70528.363	20.722	349° 10' 39"	23.018	9.959	470091.032006	-1623421.859534
							倍面積	-645.038777
							面積	322.5193885
							地積	322.51

## 画地面積(座標法)計算簿

画地番号：97-10

点名	Xn	Yn	距離	方向角	X <sub>n+1</sub> -X <sub>n-1</sub>	Y <sub>n+1</sub> -Y <sub>n-1</sub>	X <sub>n</sub> *(Y <sub>n+1</sub> -Y <sub>n-1</sub> )	Y <sub>n</sub> *(X <sub>n+1</sub> -X <sub>n-1</sub> )
97-25	47187.598	-70525.478	15.310	349° 08' 19"	17.712	10.973	517789.512854	-1249147.266336
97-23	47202.634	-70528.363	14.103	259° 06' 44"	12.372	-16.735	-789936.079990	-872576.907036
97-24	47199.970	-70542.213	2.006	169° 06' 37"	-4.634	-13.471	-635830.795870	326892.615042
97-21	47198.000	-70541.834	13.314	169° 11' 11"	-15.048	2.877	135788.646000	1061513.518032
97-20	47184.922	-70539.336	14.114	79° 04' 14"	-10.402	16.356	771756.584232	733750.173072
							倍面積	-432.132774
							面積	216.0663870
							地積	216.06

## 画地面積(座標法)計算簿

画地番号：97-11

点名	Xn	Yn	距離	方向角	X <sub>n+1</sub> -X <sub>n-1</sub>	Y <sub>n+1</sub> -Y <sub>n-1</sub>	X <sub>n</sub> *(Y <sub>n+1</sub> -Y <sub>n-1</sub> )	Y <sub>n</sub> *(X <sub>n+1</sub> -X <sub>n-1</sub> )
97-12	47175.794	-70523.207	12.020	349° 06' 35"	14.448	11.603	547380.737782	-1018919.294736
97-25	47187.598	-70525.478	14.114	259° 04' 14"	9.128	-16.129	-761088.768142	-643756.563184
97-20	47184.922	-70539.336	5.061	169° 09' 31"	-7.647	-12.906	-608968.603332	539414.302392
97-28	47179.951	-70538.384	2.342	169° 09' 02"	-7.272	1.393	65721.671743	512955.128448
97-37	47177.650	-70537.943	1.878	169° 08' 19"	-4.146	0.795	37506.231750	292450.311678
97-35	47175.805	-70537.589	2.703	169° 10' 05"	-4.500	0.862	40665.543910	317419.150500
97-26	47173.150	-70537.081	14.123	79° 12' 37"	-0.011	14.382	678444.243300	775.907891
							倍面積	-338.942989
							面積	169.4714945
							地積	169.47