

B^b Clarinet 1

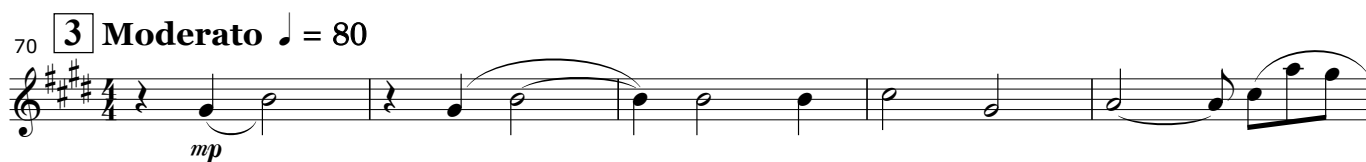
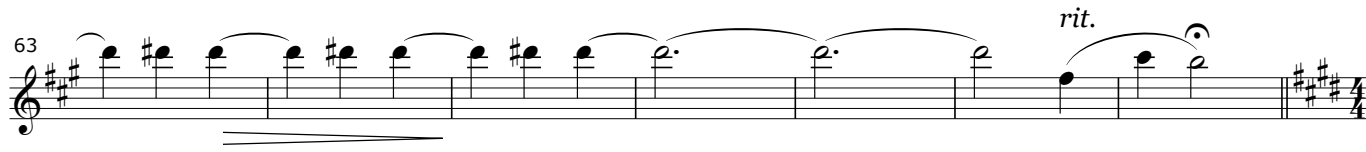
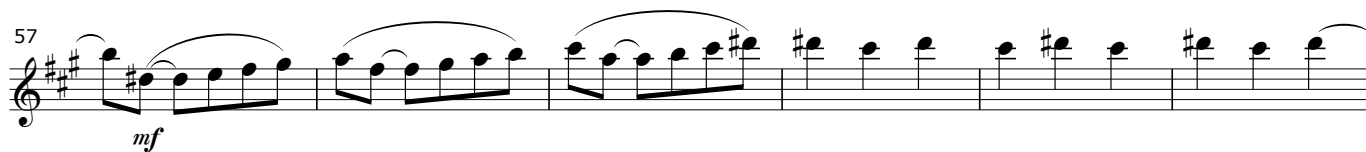
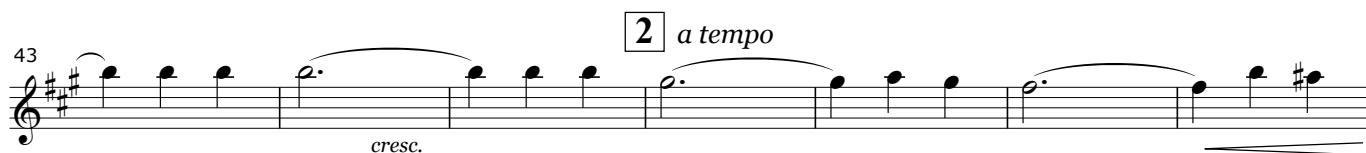
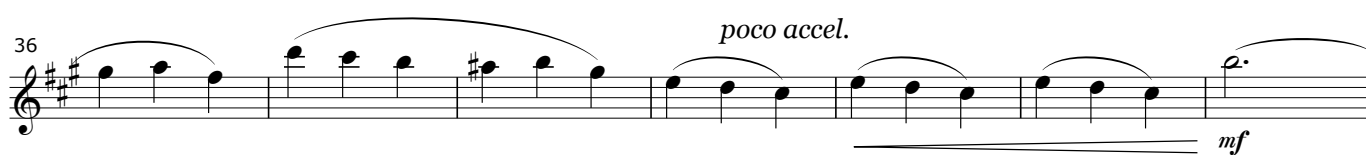
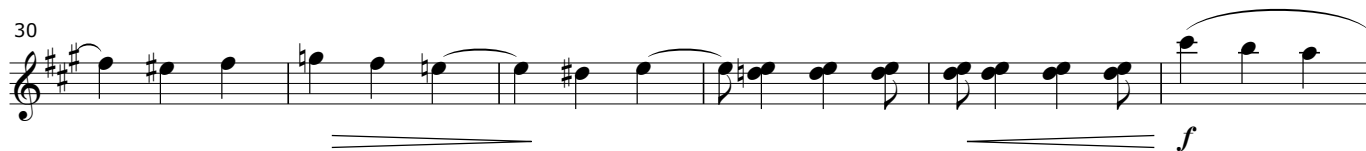
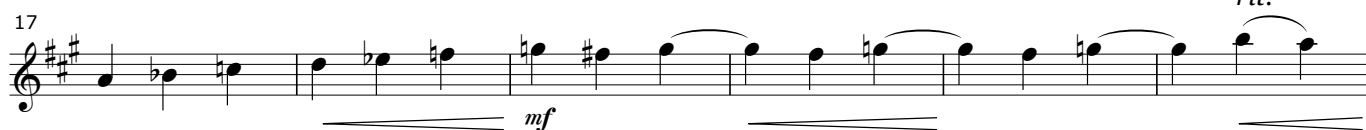
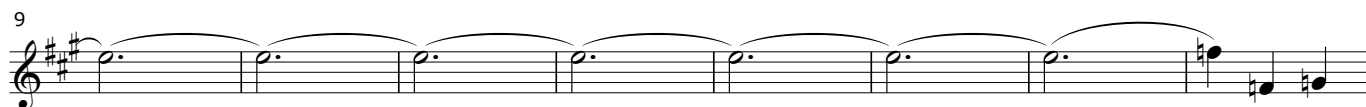
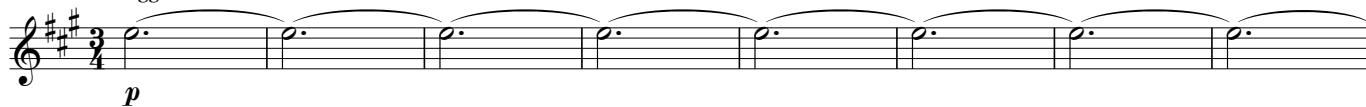
B \flat Clarinet 1

前橋市の歌 交声曲 赤城嶺に ～吹奏楽と混声四部合唱のために～

作詞 和田利男
作曲 川崎祥悦
編曲 山本教生

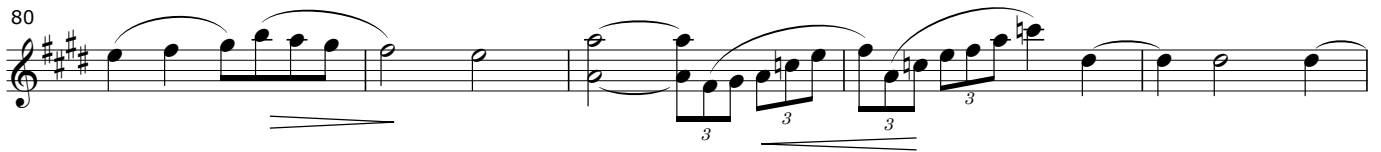
$\text{♩} = 52$

stagger breathe



B^b Clarinet 1-3

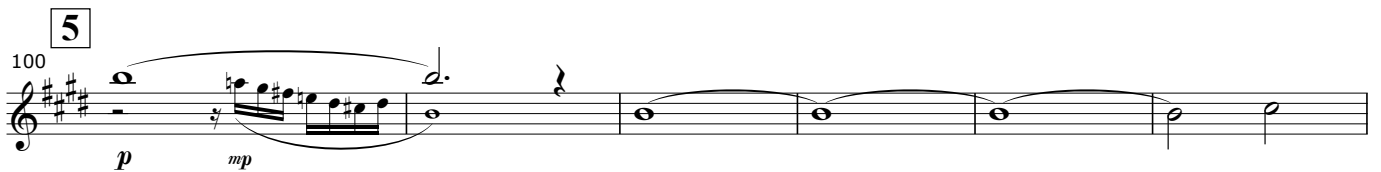
75 

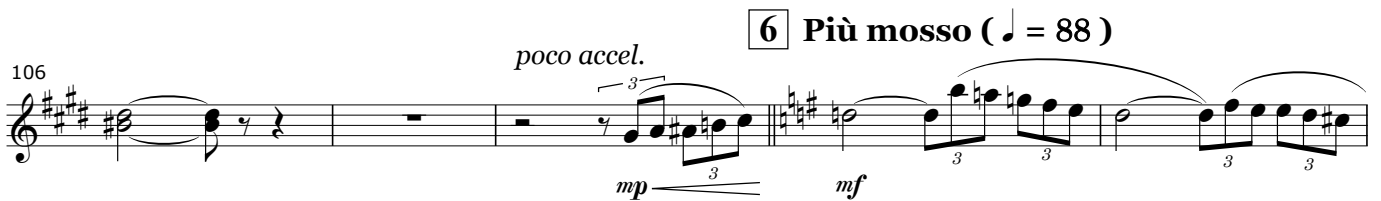
80 

85 **4** 

90 

95 

100 **5** 

106 **6 Più mosso (♩ = 88)** *poco accel.* 

111 

115 *rit.* 

118 **7 Tempo I (♩ = 80)** 

122 

B^b Clarinet 1-4

128 *mf*

poco a poco accel. e cresc.
133 *f*

8 Allegro agitato (♩ = 132)

137 *ff*

142 *sub.p poco a poco cresc.* *f*

148 *sfp*

153

156 *mf* *f*

160 *p*

165 *poco sfpp* *p*

170

174 *p*

179 *molto riten.* **Meno mosso**
mp *p*

B \flat Clarinet 1-5

185 **11** Allegro (♩ = 132)

Musical notation for exercise 11, measures 185-190. The key signature has two sharps (F# and C#). Measure 185 starts with a whole rest, followed by a quarter note G4, a quarter note A4, and a quarter note B4. Measure 186 has a quarter note C5, a quarter note D5, and a quarter note E5. Measure 187 has a quarter note F5, a quarter note G5, and a quarter note A5. Measure 188 has a quarter note B5, a quarter note C6, and a quarter note D6. Measure 189 has a quarter note E6, a quarter note F6, and a quarter note G6. Measure 190 has a quarter note A6, a quarter note B6, and a quarter note C7. Dynamics include *p* and *mf*. A first ending bracket labeled "11" spans measures 189 and 190.

206 *rall.* **12** Adagio sostenuto (♩ = 66)

Musical notation for exercise 12, measures 206-212. The key signature has three sharps (F#, C#, G#). Measure 206 has a whole rest, followed by a half note G4, a half note A4, and a half note B4. Measure 207 has a half note C5, a half note D5, and a half note E5. Measure 208 has a half note F5, a half note G5, and a half note A5. Measure 209 has a half note B5, a half note C6, and a half note D6. Measure 210 has a half note E6, a half note F6, and a half note G6. Measure 211 has a half note A6, a half note B6, and a half note C7. Measure 212 has a half note D7, a half note E7, and a half note F7. Dynamics include *p* and *mf*. A first ending bracket labeled "2" spans measures 206 and 207.

Musical notation for exercise 12, measures 212-218. The key signature has three sharps (F#, C#, G#). Measure 212 has a half note G4, a half note A4, and a half note B4. Measure 213 has a half note C5, a half note D5, and a half note E5. Measure 214 has a half note F5, a half note G5, and a half note A5. Measure 215 has a half note B5, a half note C6, and a half note D6. Measure 216 has a half note E6, a half note F6, and a half note G6. Measure 217 has a half note A6, a half note B6, and a half note C7. Measure 218 has a half note D7, a half note E7, and a half note F7. Dynamics include *pp* and *p*. Time signatures change from 2/4 to 3/4 and then to 4/4.

Musical notation for exercise 13, measures 224-230. The key signature has three sharps (F#, C#, G#). Measure 224 has a quarter note G4, a quarter note A4, and a quarter note B4. Measure 225 has a quarter note C5, a quarter note D5, and a quarter note E5. Measure 226 has a quarter note F5, a quarter note G5, and a quarter note A5. Measure 227 has a quarter note B5, a quarter note C6, and a quarter note D6. Measure 228 has a quarter note E6, a quarter note F6, and a quarter note G6. Measure 229 has a quarter note A6, a quarter note B6, and a quarter note C7. Measure 230 has a quarter note D7, a quarter note E7, and a quarter note F7. Dynamics include *mf* and *mp*. Time signatures change from 2/4 to 3/4 and then to 4/4.

Musical notation for exercise 13, measures 230-236. The key signature has three sharps (F#, C#, G#). Measure 230 has a quarter note G4, a quarter note A4, and a quarter note B4. Measure 231 has a quarter note C5, a quarter note D5, and a quarter note E5. Measure 232 has a quarter note F5, a quarter note G5, and a quarter note A5. Measure 233 has a quarter note B5, a quarter note C6, and a quarter note D6. Measure 234 has a quarter note E6, a quarter note F6, and a quarter note G6. Measure 235 has a quarter note A6, a quarter note B6, and a quarter note C7. Measure 236 has a quarter note D7, a quarter note E7, and a quarter note F7. Dynamics include *mf* and *p*. Time signatures change from 3/4 to 4/4 and then to 2/4.

240 **14** Moderato (♩ = 112)

Musical notation for exercise 14, measures 240-247. The key signature has three sharps (F#, C#, G#). Measure 240 has a whole note G4, a whole note A4, and a whole note B4. Measure 241 has a whole note C5, a whole note D5, and a whole note E5. Measure 242 has a whole note F5, a whole note G5, and a whole note A5. Measure 243 has a whole note B5, a whole note C6, and a whole note D6. Measure 244 has a whole note E6, a whole note F6, and a whole note G6. Measure 245 has a whole note A6, a whole note B6, and a whole note C7. Measure 246 has a whole note D7, a whole note E7, and a whole note F7. Measure 247 has a whole note G7, a whole note A7, and a whole note B7. Dynamics include *f*, *p*, and *mp*. A first ending bracket labeled "2" spans measures 240 and 241. Time signatures change from 2/4 to 3/4 and then to 4/4.

Musical notation for exercise 14, measures 247-251. The key signature has three sharps (F#, C#, G#). Measure 247 has a half note G4, a half note A4, and a half note B4. Measure 248 has a half note C5, a half note D5, and a half note E5. Measure 249 has a half note F5, a half note G5, and a half note A5. Measure 250 has a half note B5, a half note C6, and a half note D6. Measure 251 has a half note E6, a half note F6, and a half note G6. Dynamics include *cresc.* and *f*. Time signatures change from 3/4 to 5/4 and then to 4/4.

Musical notation for exercise 14, measures 251-255. The key signature has three sharps (F#, C#, G#). Measure 251 has a half note G4, a half note A4, and a half note B4. Measure 252 has a half note C5, a half note D5, and a half note E5. Measure 253 has a half note F5, a half note G5, and a half note A5. Measure 254 has a half note B5, a half note C6, and a half note D6. Measure 255 has a half note E6, a half note F6, and a half note G6. Dynamics include *p* and *poco rit.*. Time signature is 4/4.

259 **15** Meno mosso

Musical notation for exercise 15, measures 259-265. The key signature has three sharps (F#, C#, G#). Measure 259 has a whole note G4, a whole note A4, and a whole note B4. Measure 260 has a whole note C5, a whole note D5, and a whole note E5. Measure 261 has a whole note F5, a whole note G5, and a whole note A5. Measure 262 has a whole note B5, a whole note C6, and a whole note D6. Measure 263 has a whole note E6, a whole note F6, and a whole note G6. Measure 264 has a whole note A6, a whole note B6, and a whole note C7. Measure 265 has a whole note D7, a whole note E7, and a whole note F7. Dynamics include *p*. A first ending bracket labeled "4" spans measures 259 and 260. Time signature is 4/4.

B^b Clarinet 1-6

B \flat Clarinet 1-7

268 *pp* *poco* *mf*

273

276 **16** *mf*

288 *ff*

293 *mp* *f* *ff* **17** $\text{♩} = 72$

298 *mf* a2

304 *p* *mf* 3

309 *f* **18**

314 *mf*

320 *p* *molto rit.* 2

B \flat Clarinet 1-8

327 **19** **Meno mosso** ($\text{♩} = 112$) **20**

30 19 *mf*

378 **Più mosso**

f 15

22 **Allegro**

f *f*

Agitato

f

23 **Allegro assai** ($\text{♩} = 160$)

4 *f*

sf *f*

f

f

429 **24**

f

f

f

25 $\text{♩} = 72$

6 *f*

B \flat Clarinet 1-9

447 *poco*

454 *f*

460 *f* *mf*

466 *f* *rit.* *f*

26 Grave (♩ = 80)

471 *mf* *f*

476 *f* *p*

481 *mf*

486 *f* *sfp* *poco sfp*

493 *f*

28 Un poco meno mosso

499 *pp*

504

509 *p* *mf*

515 *f* *p dolce* *pp* *2*

B \flat Clarinet 1-10

29 Allegro vivo (♩ = 144)

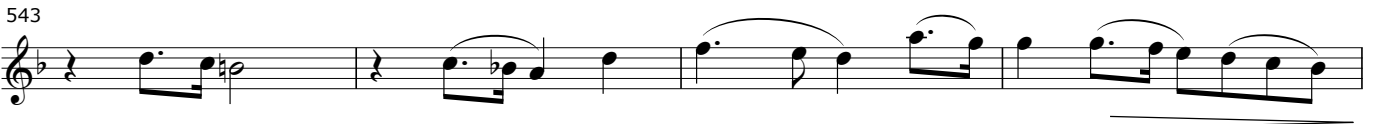
522 

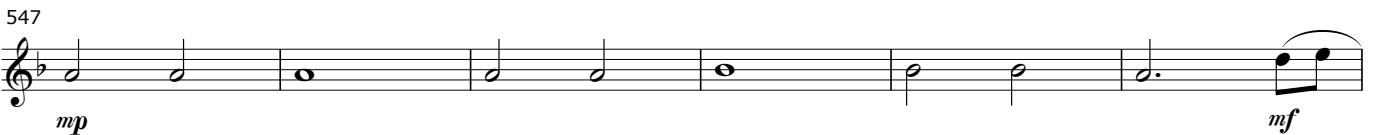
529 

30 Maestoso (♩ = 104)

535 *rit.* 

539 

543 

547 *mp* 

31

553 

557 

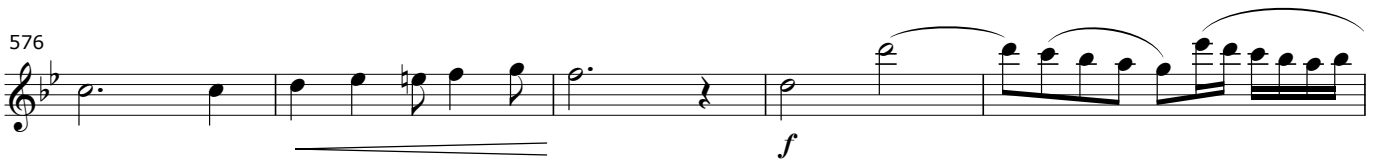
562 *accel.* 

B \flat Clarinet 1-11

32 Tempo di marcia (♩ = 120)

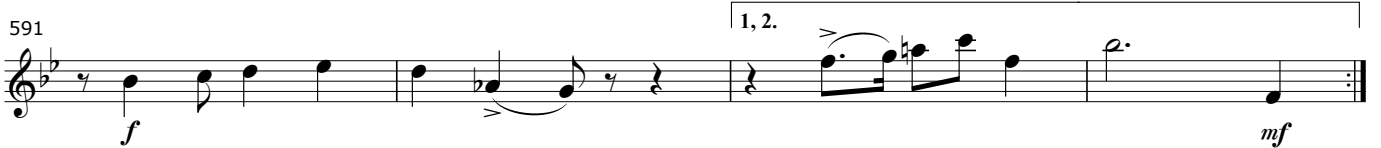
567 

571 

576 

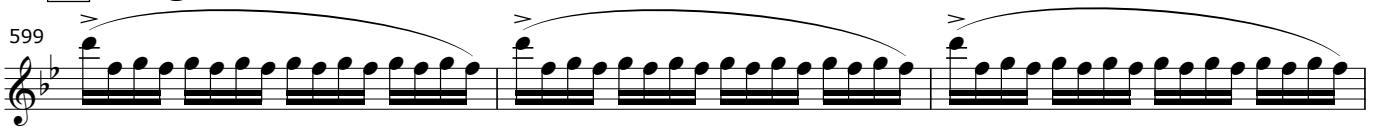
581 

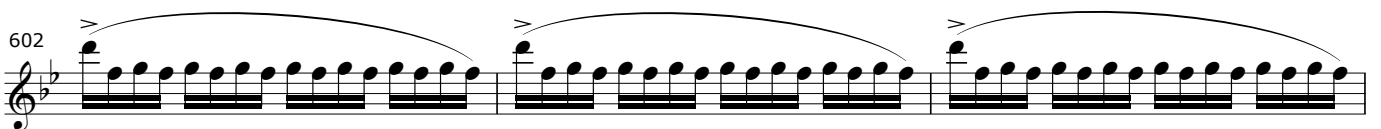
587 

591 

595 

34 Allegro vivace (♩ = 152)

599 

602 

605 